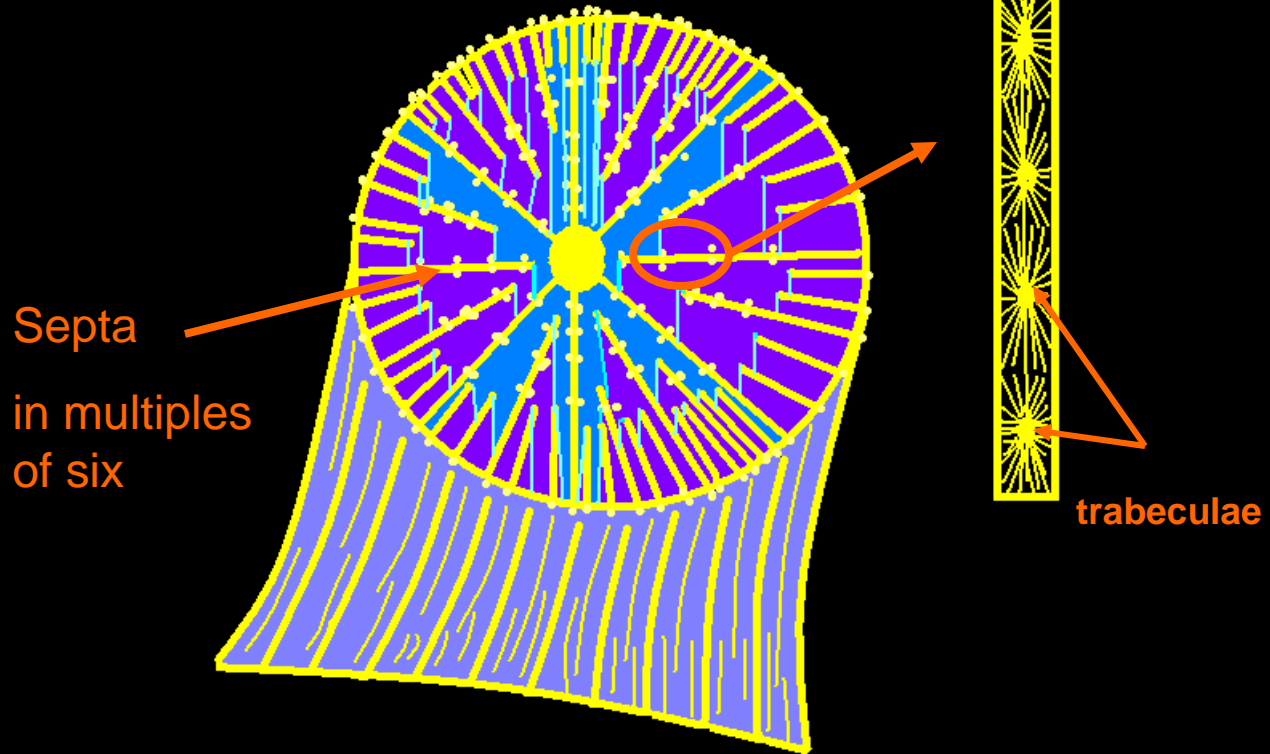


**Ahermatypic hexacorals
(Scleractinia) & Bryozoa of the
Pinecrest Beds of Sarasota, Florida:
Late Pliocene Tamiami Fm.**

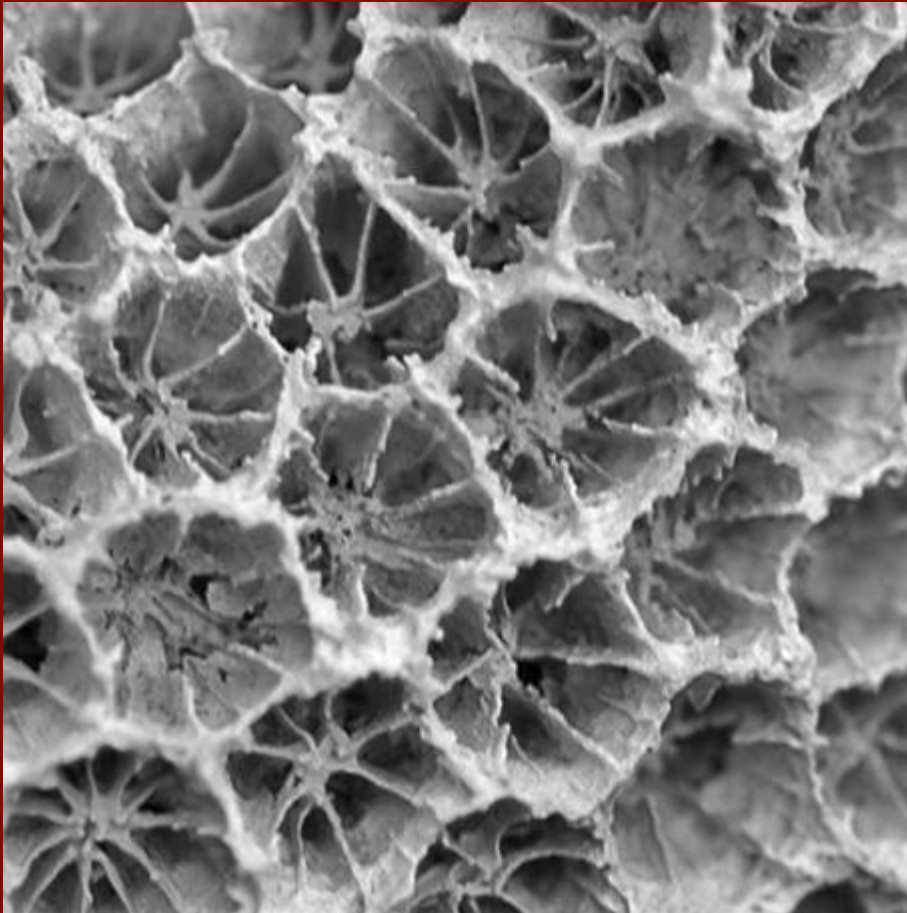
John E B Baker

Corals (Anthozoa) of the
Pinecrest beds #6-#7 of
the Late Pliocene
Tamiami Fm., Sarasota,
FL

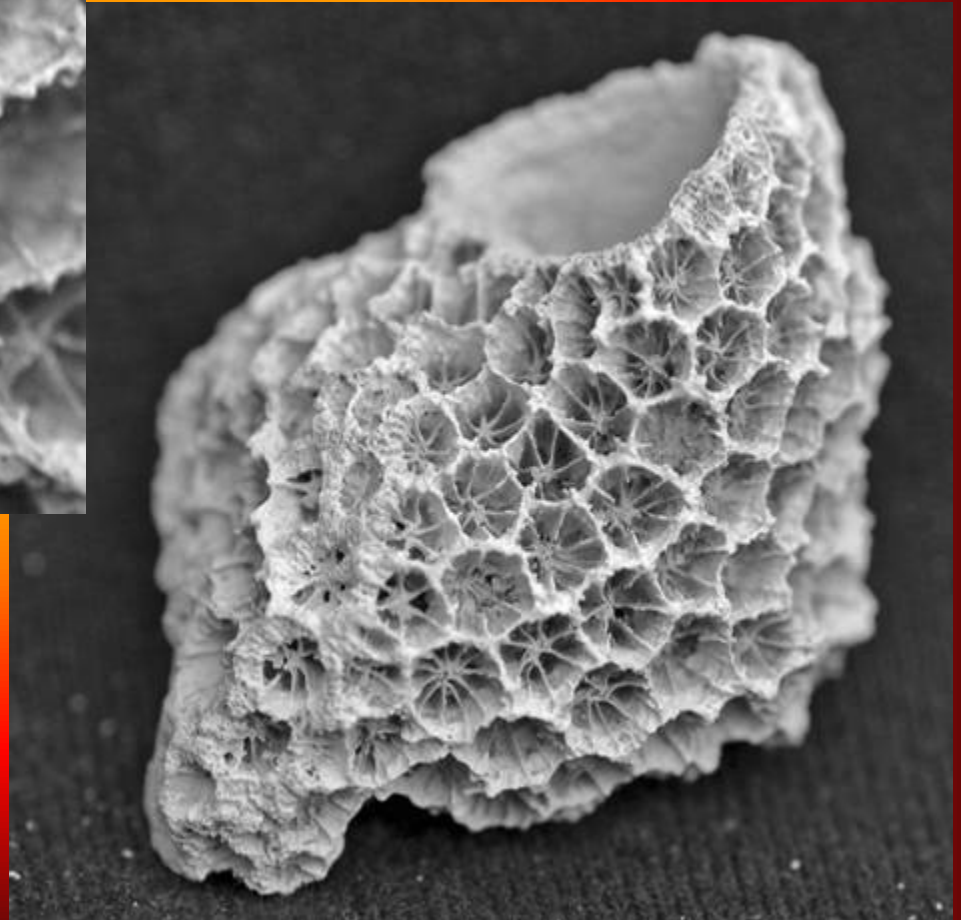
hexacorals



Septastrea marylandicus



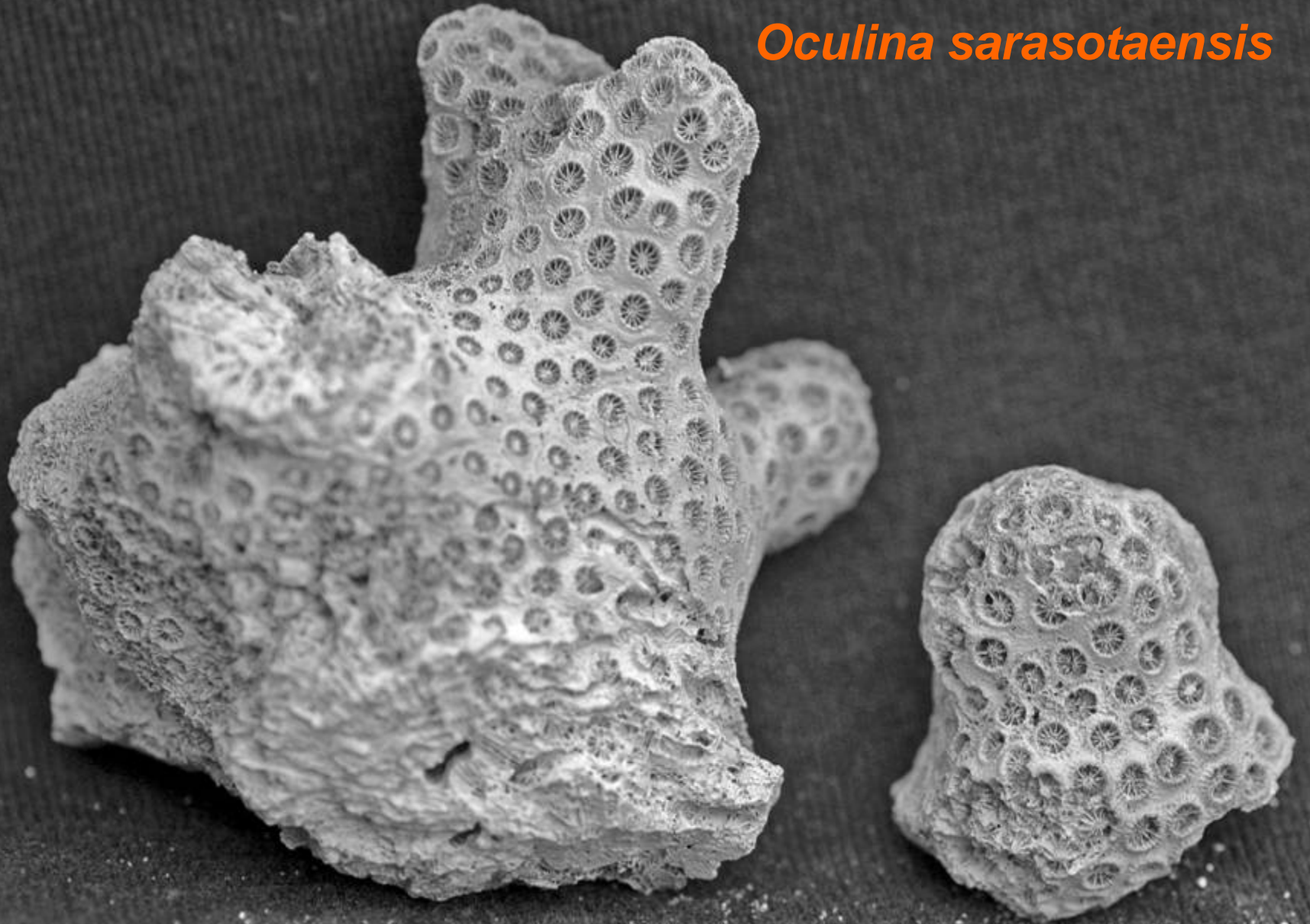
Encrusting small, dead
gastropod occupied by a
hermit crab

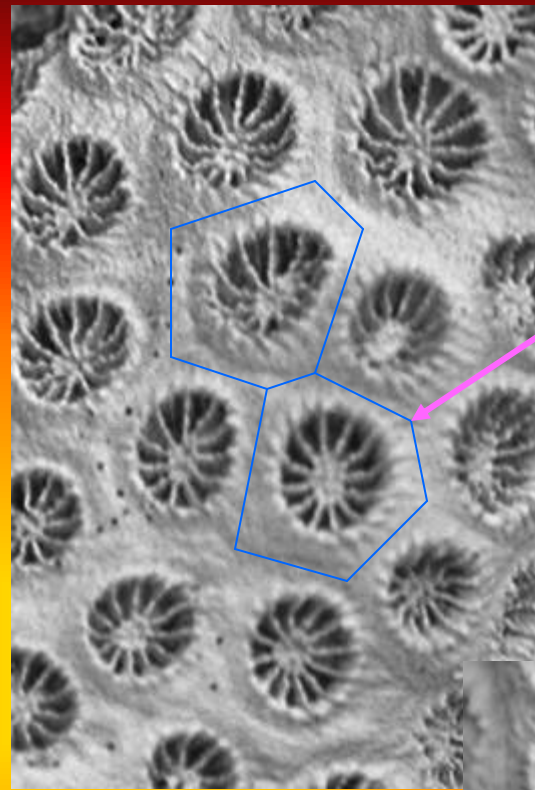
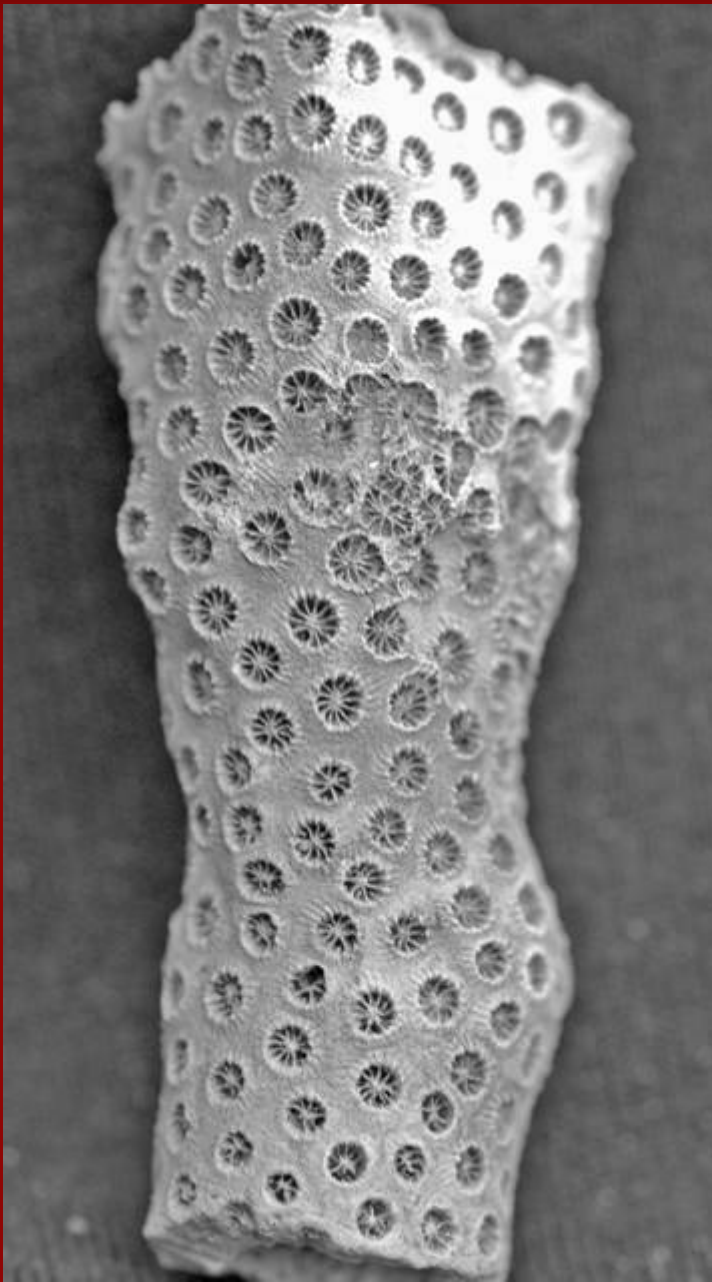


Septastrea crassa ?

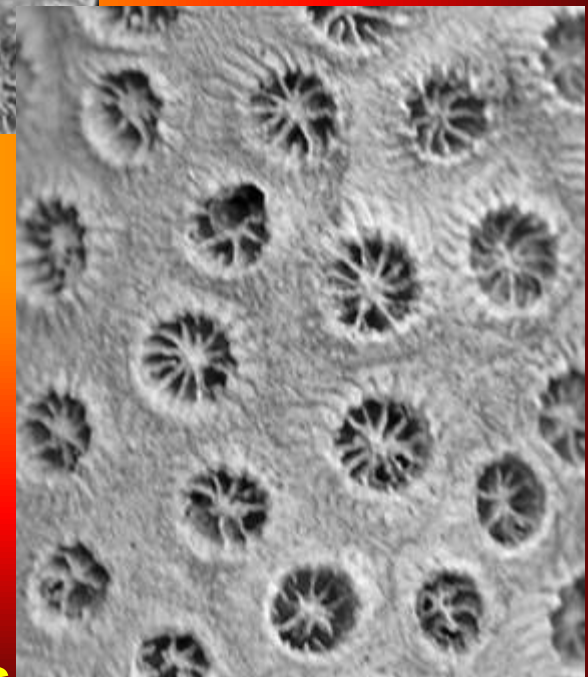


Oculina sarasotaensis





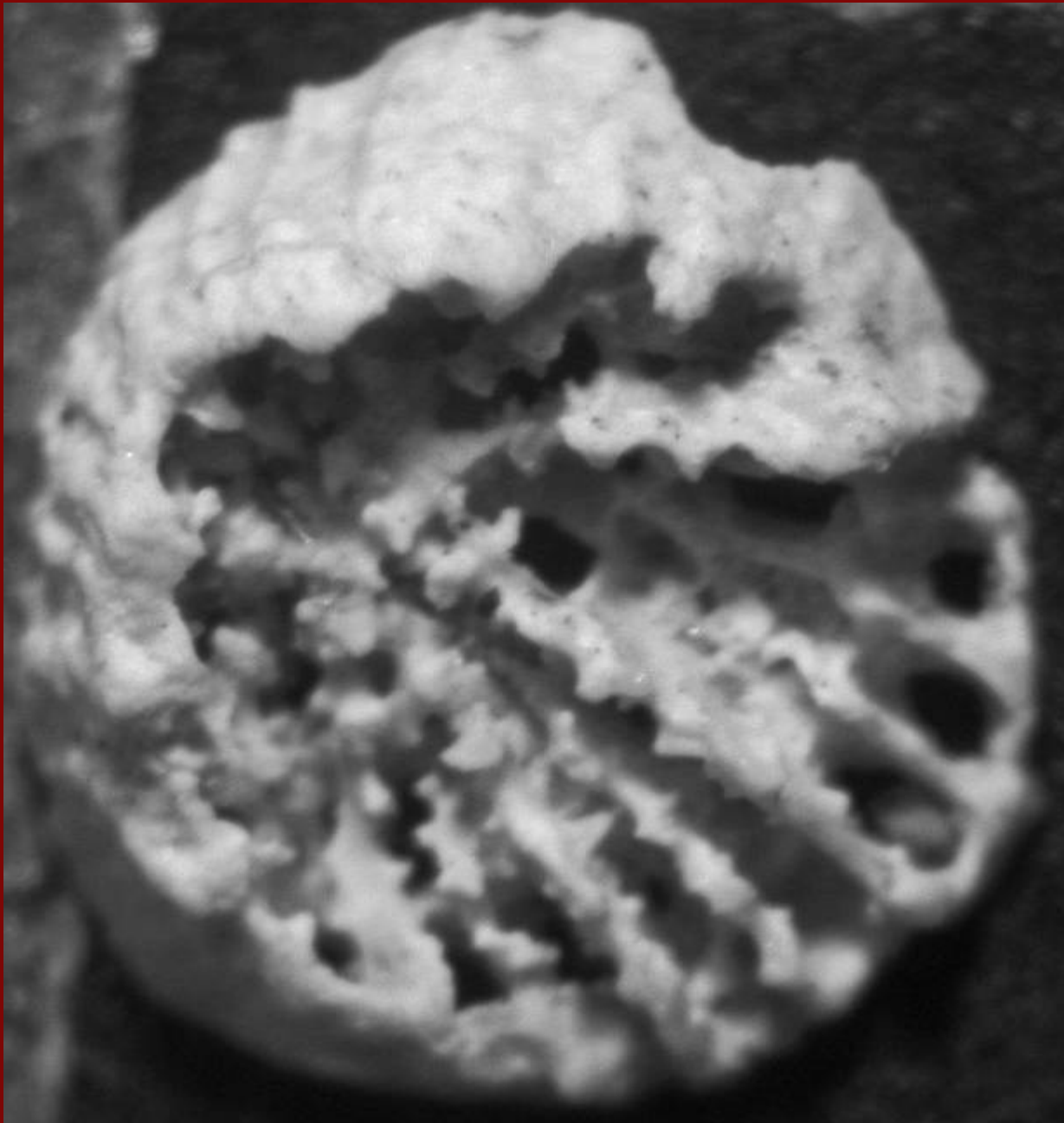
5-6 sided
corallites w/
round calyx &
columella –
12 septa at
surface, 24
total



Oculina sarasotaensis

Oculina sarasotaensis

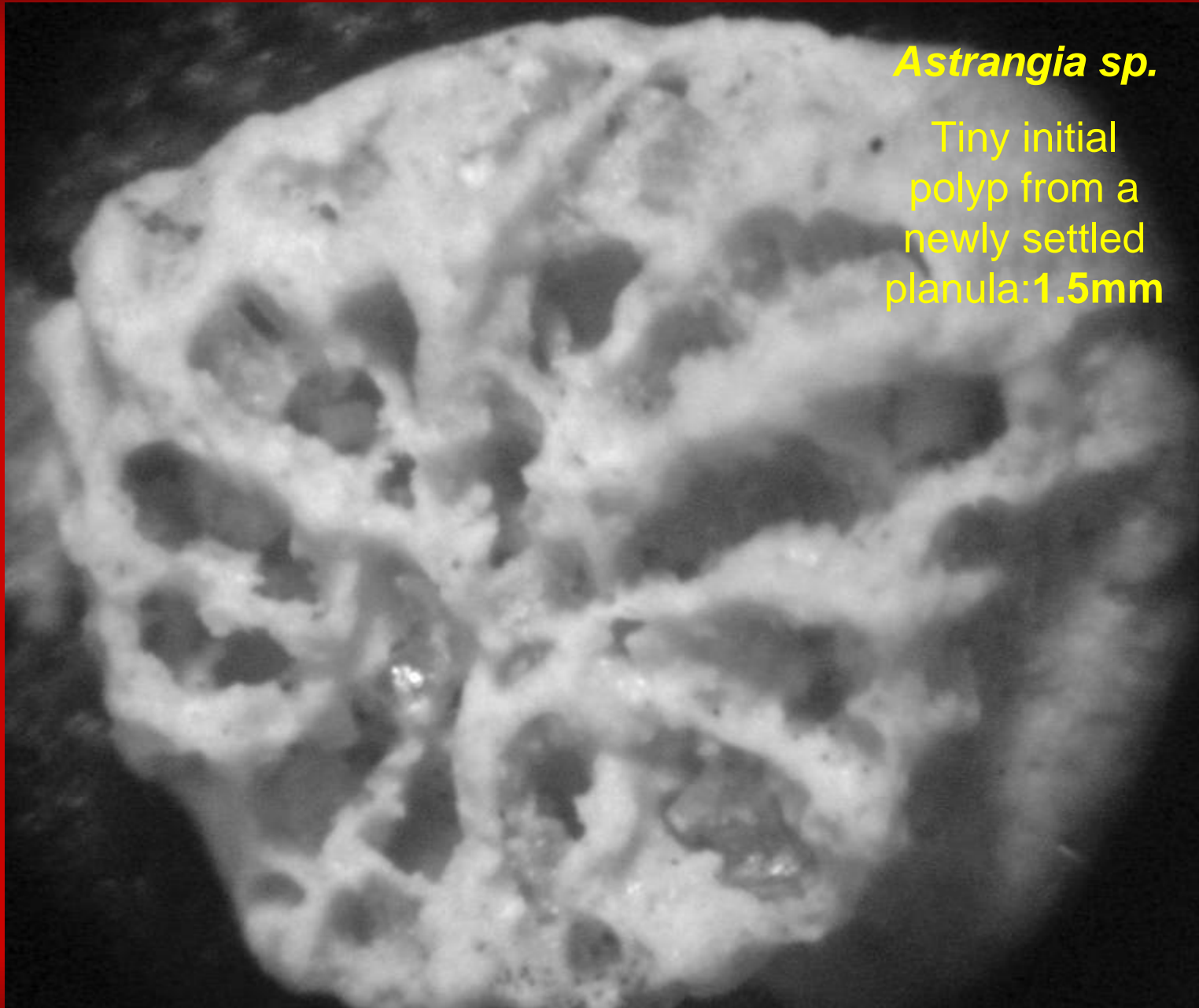




***Astrangia* sp.**

Tiny initial
polyp from a
newly settled
planula

1 mm



***Astrangia* sp.**

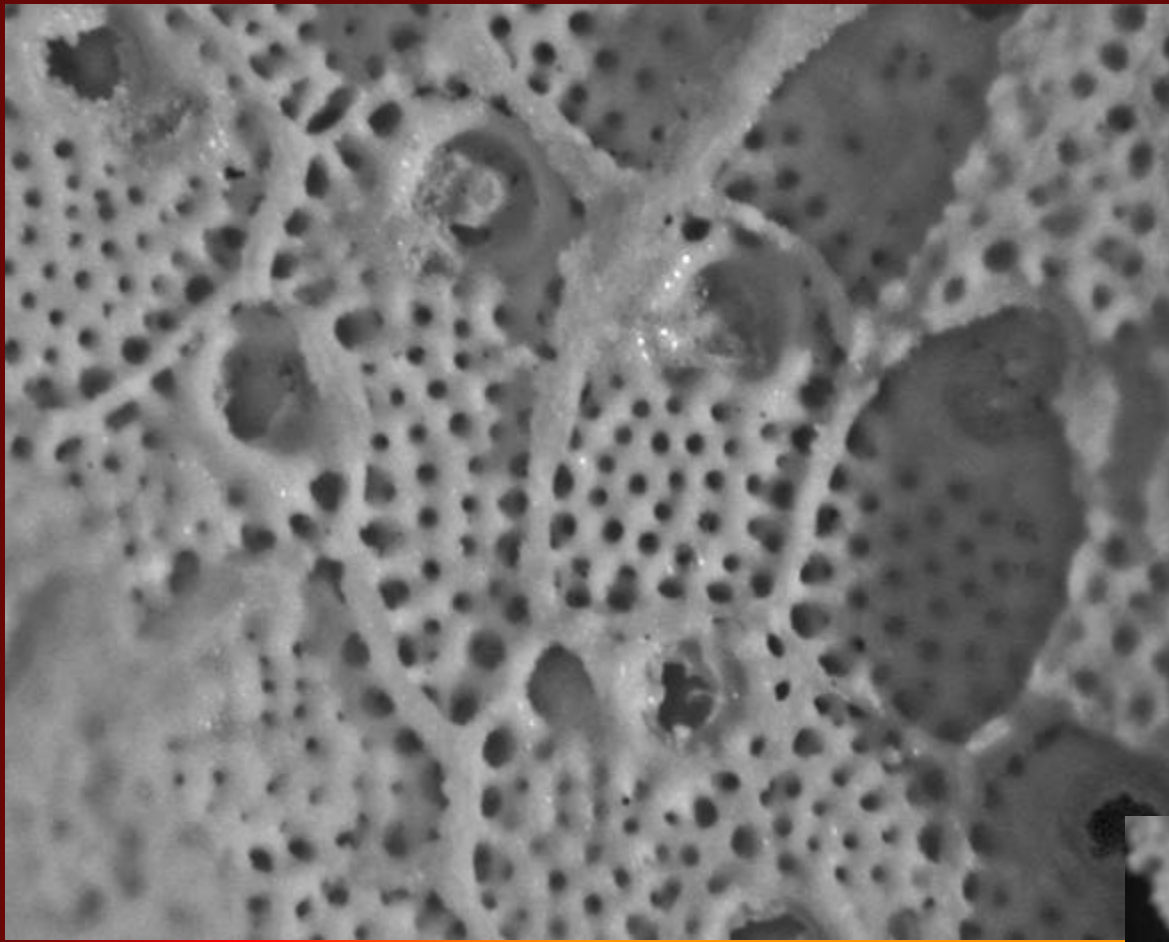
• Tiny initial polyp from a newly settled planula: **1.5mm**

Bryozoa of the
Pinecrest beds
#6-#7 of the Late
Pliocene
Tamiami Fm.,
Sarasota, FL

**Encrusting Multilaminar
Bryozoa**

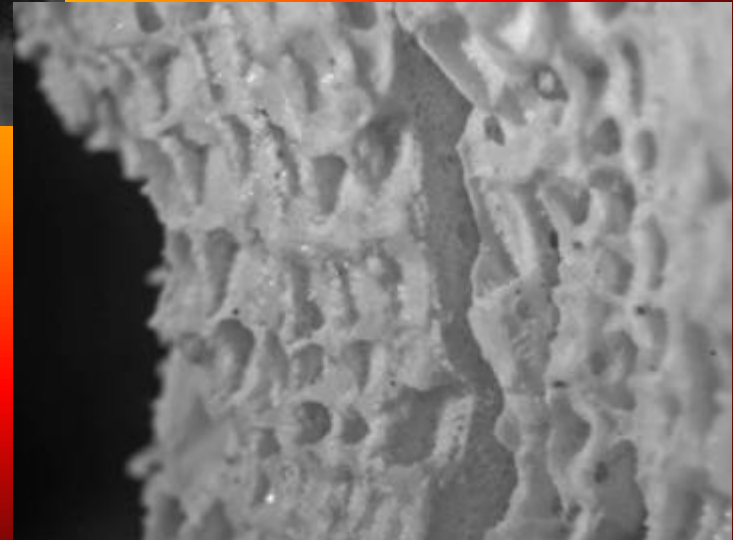


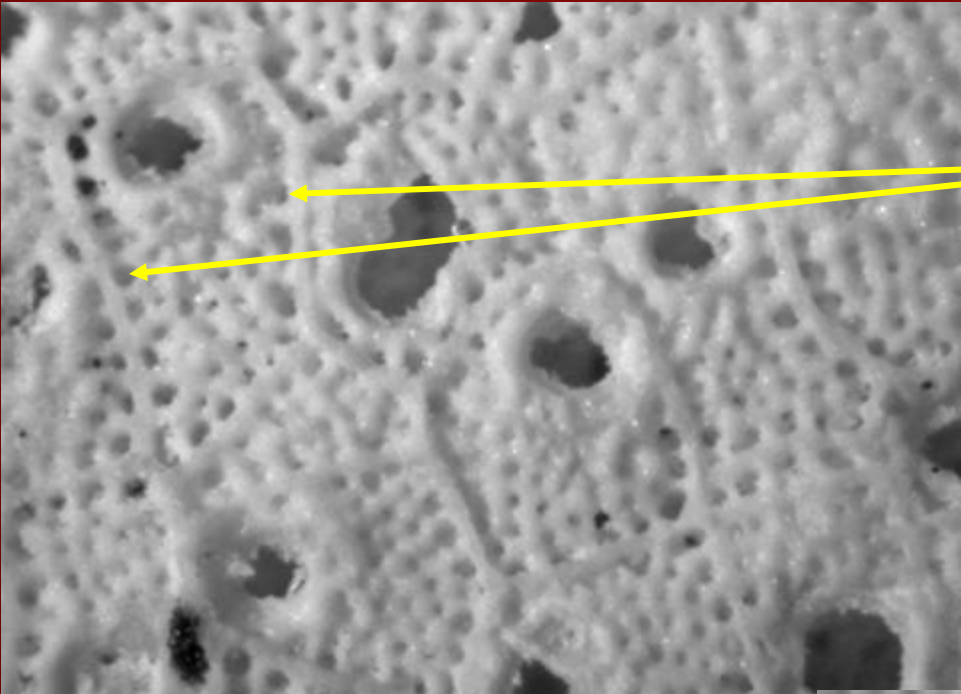
Schizoporella floridana



*Schizoporella
floridana*

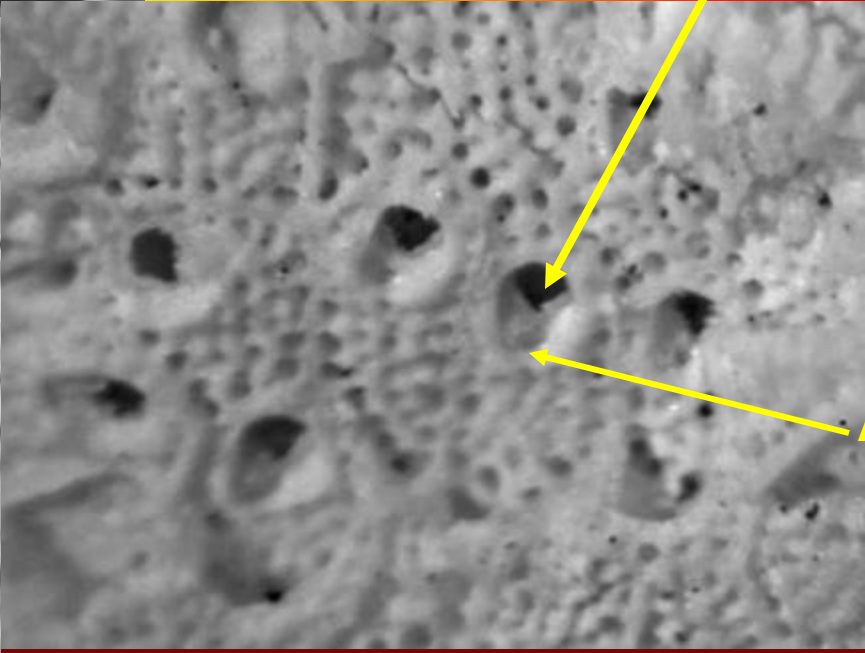
zoid height
~500um





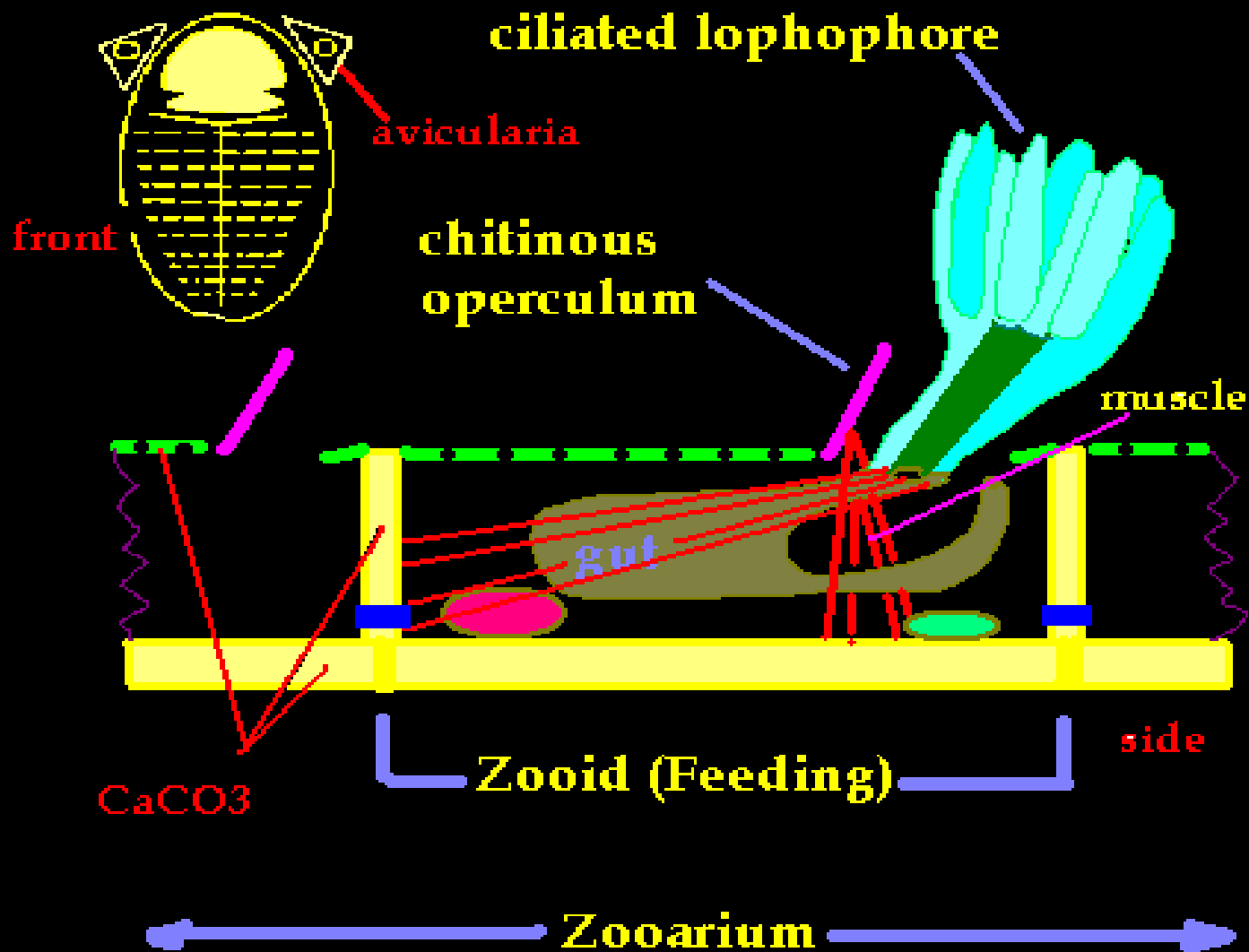
Areolae around frontal wall

Schizoporella floridana



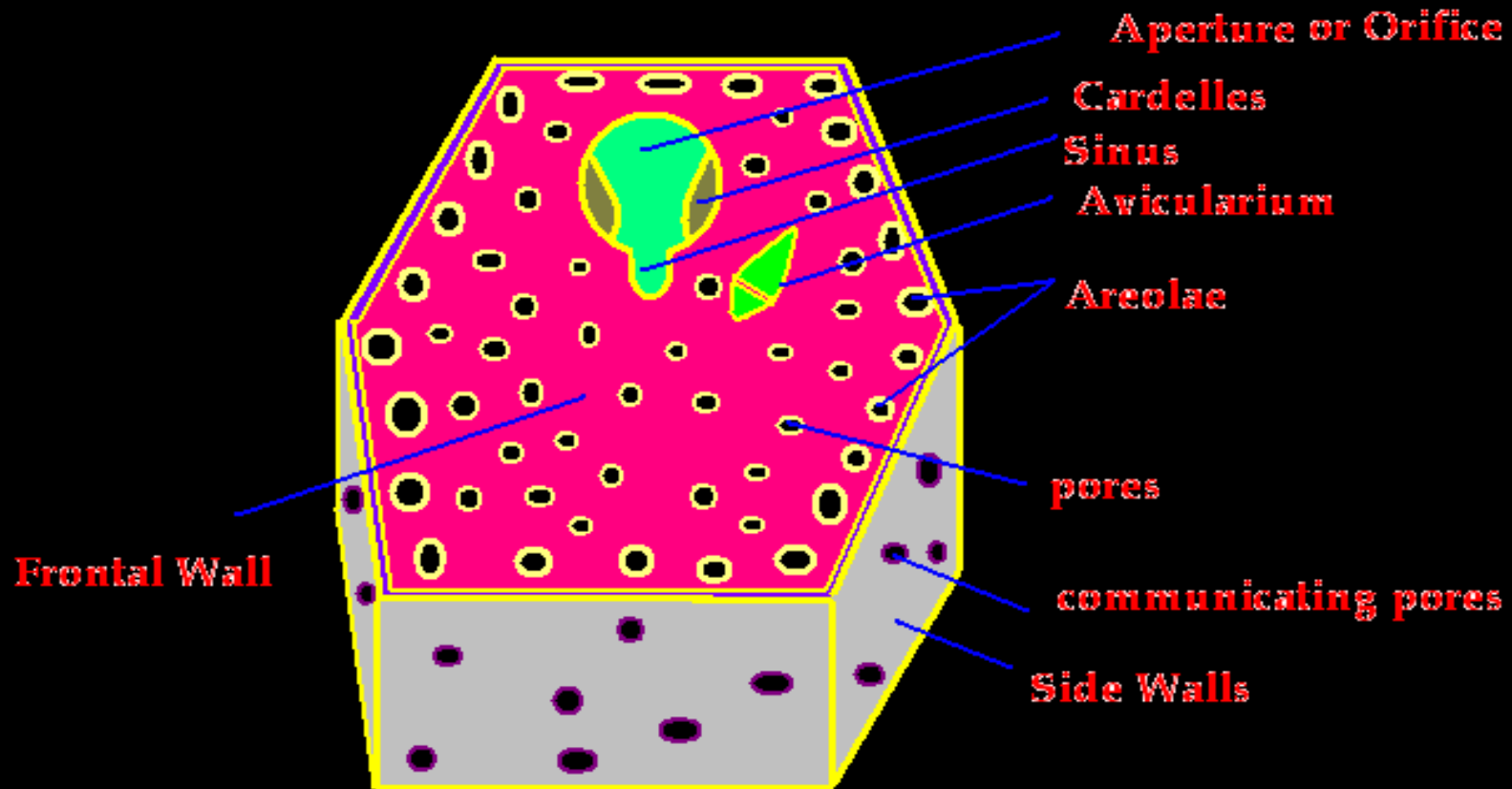
orifice

Advent. avic.

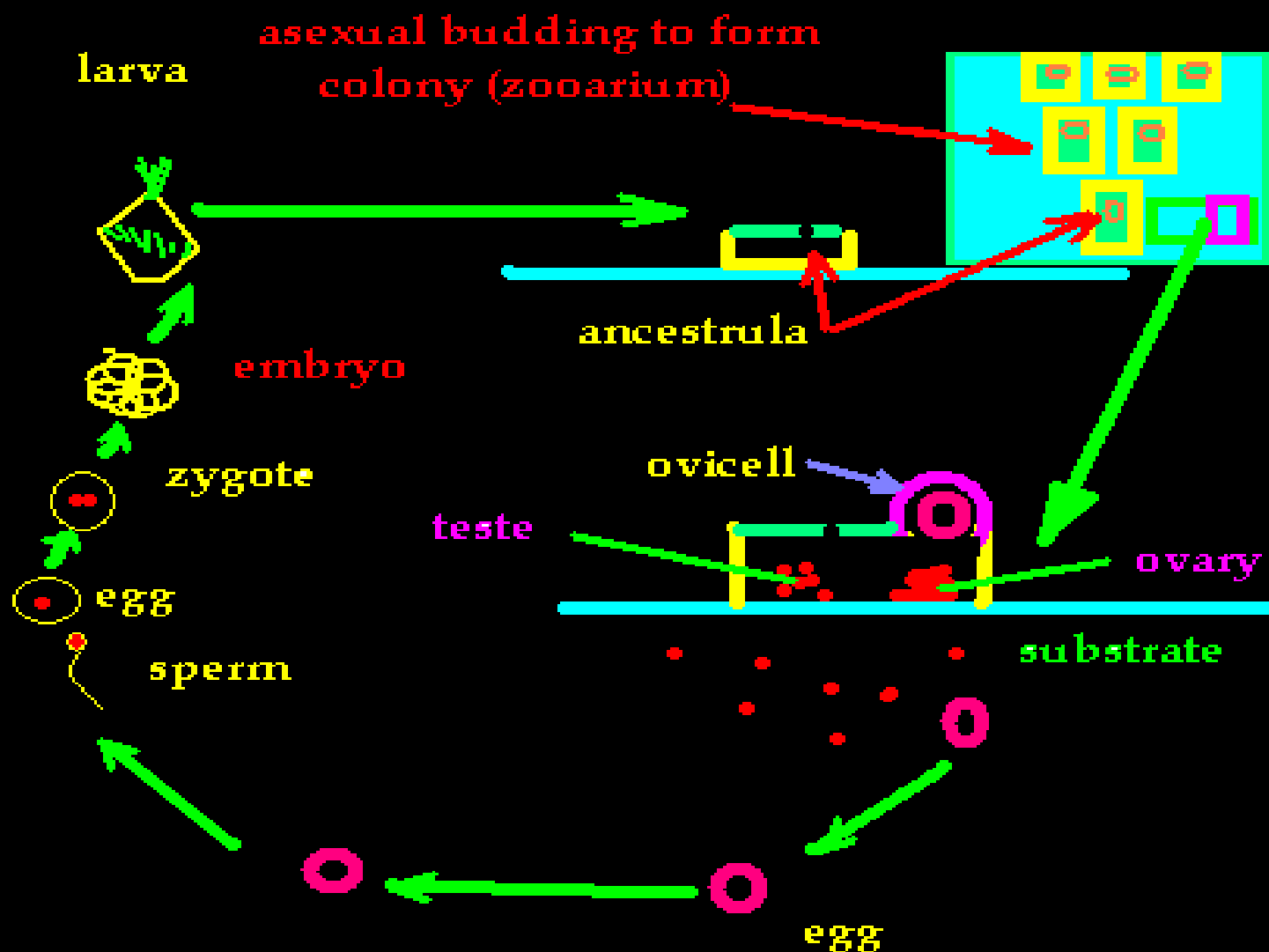


A Cheilostome Bryozoa polyp
 Eucoelomate-Deuterostome

Gymnolaemata: Cheilostomata: Ascophora

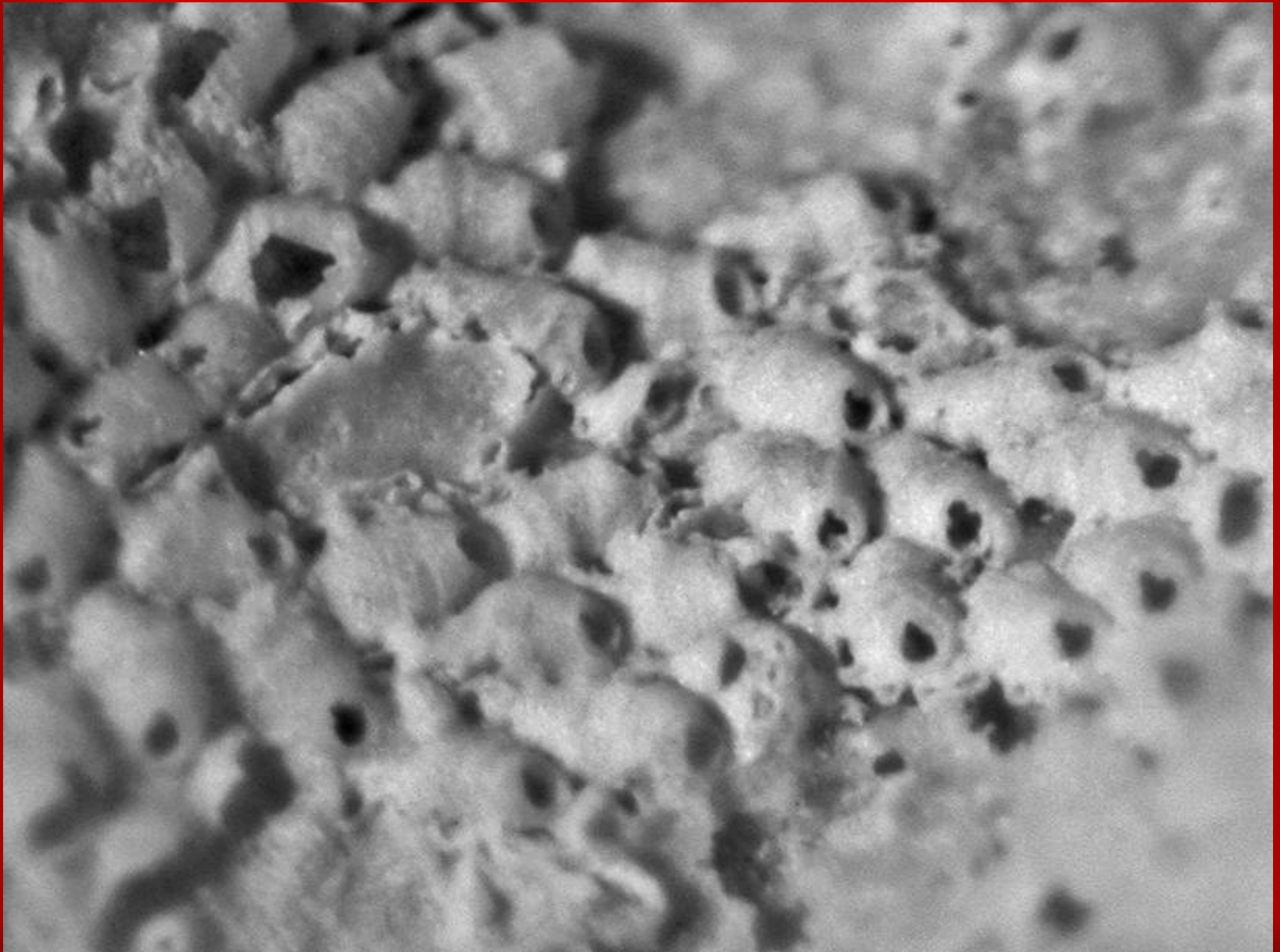


to ancestrula=proximal

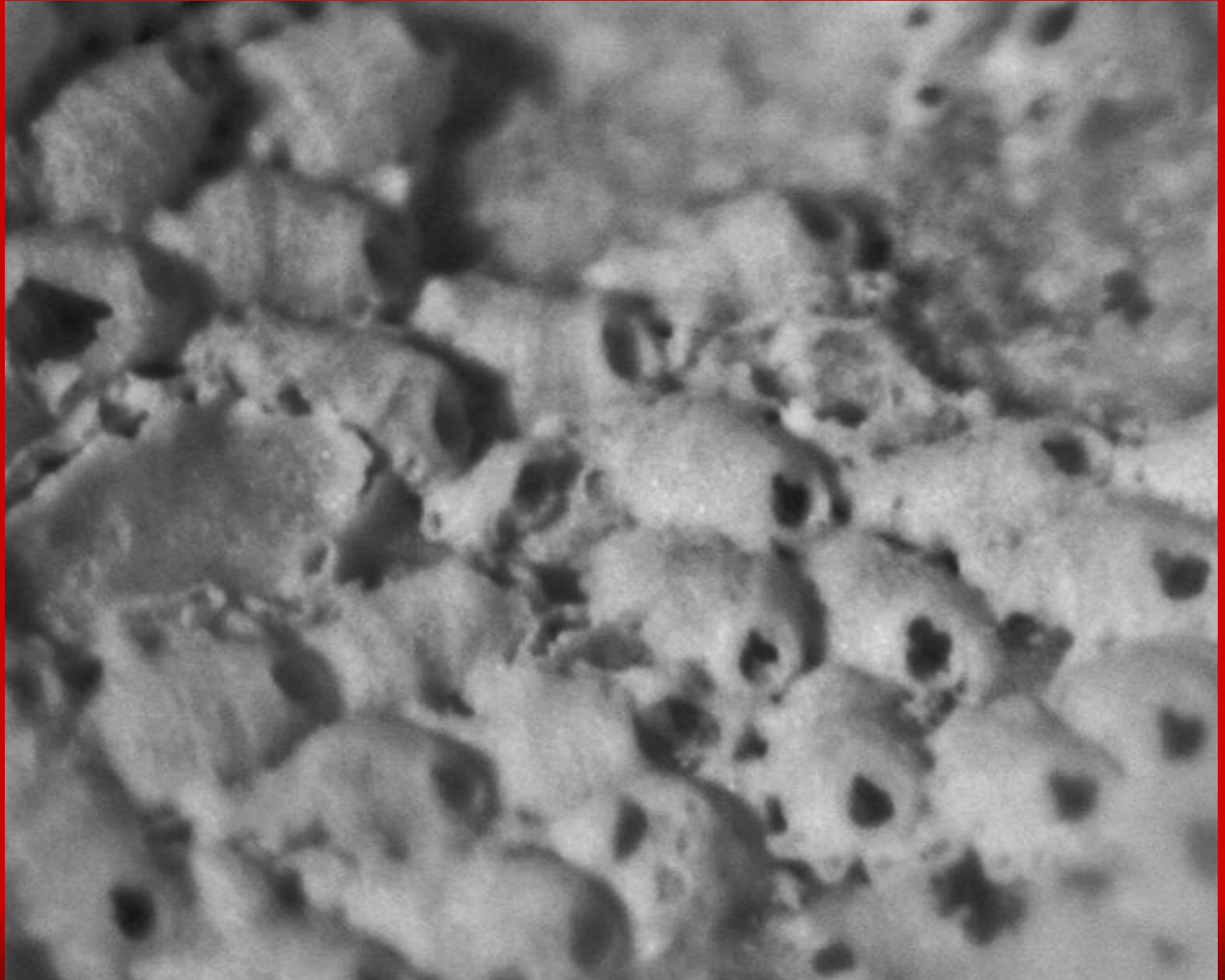


Bryozoan Life Cycle

***Hippopthoa* sp.: an Ascophoran**



Hippopthoa sp.

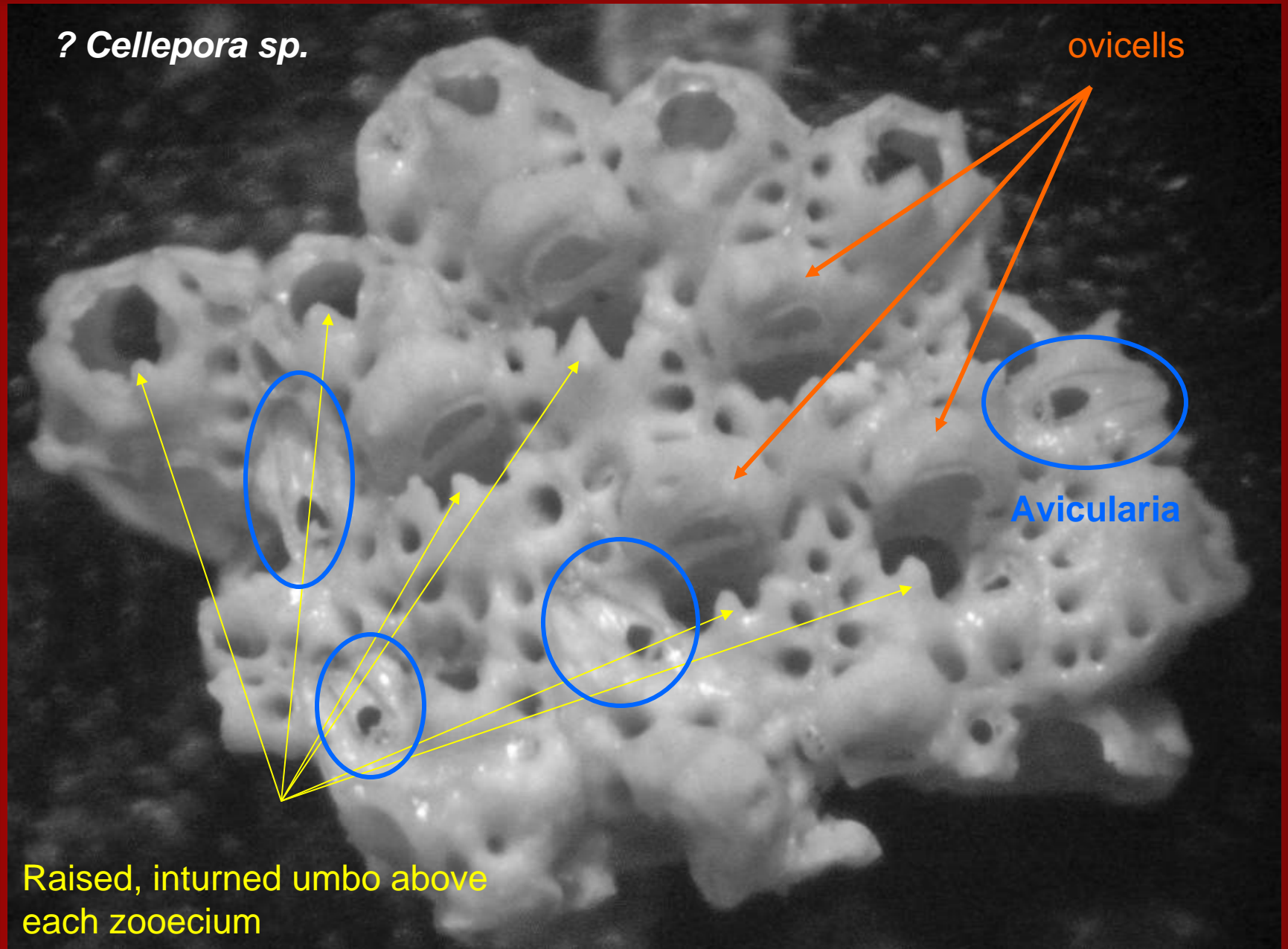


? *Cellepora* sp.

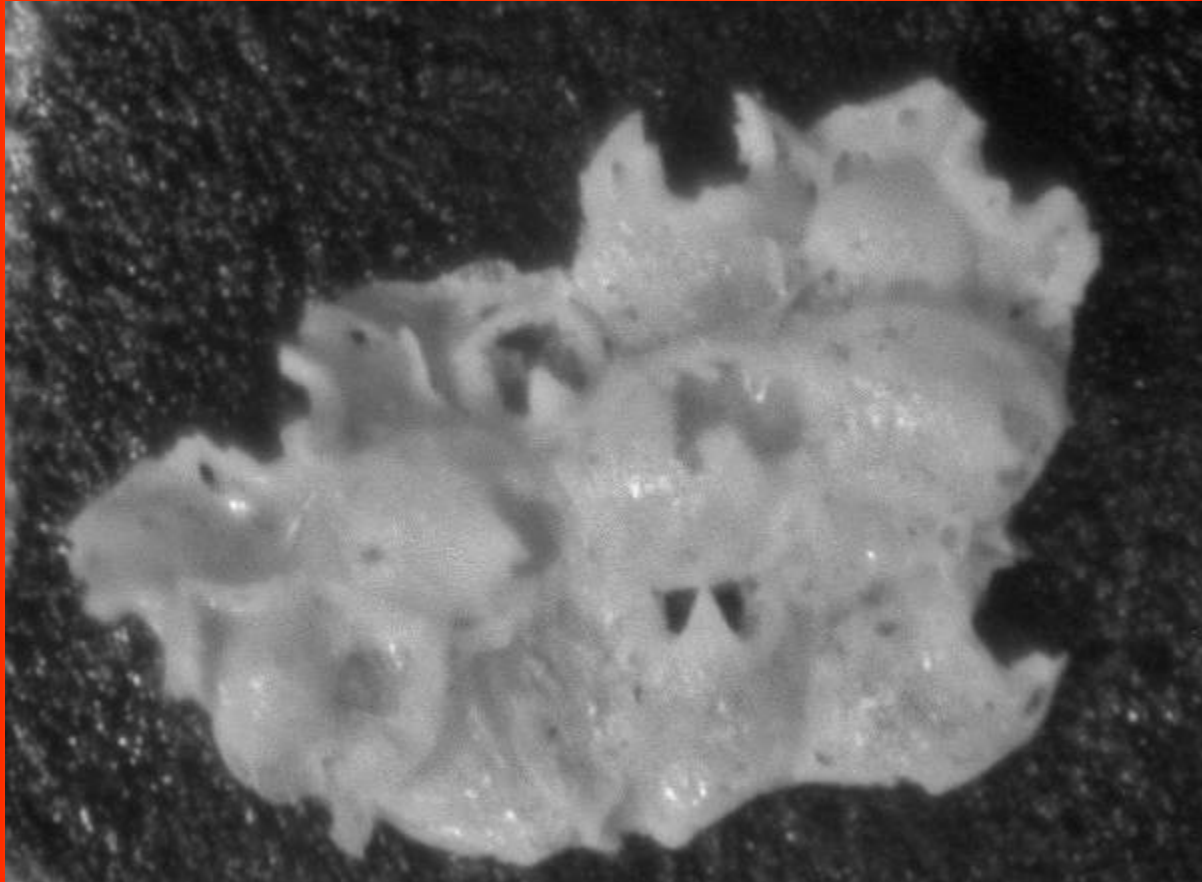
ovicells

Avicularia

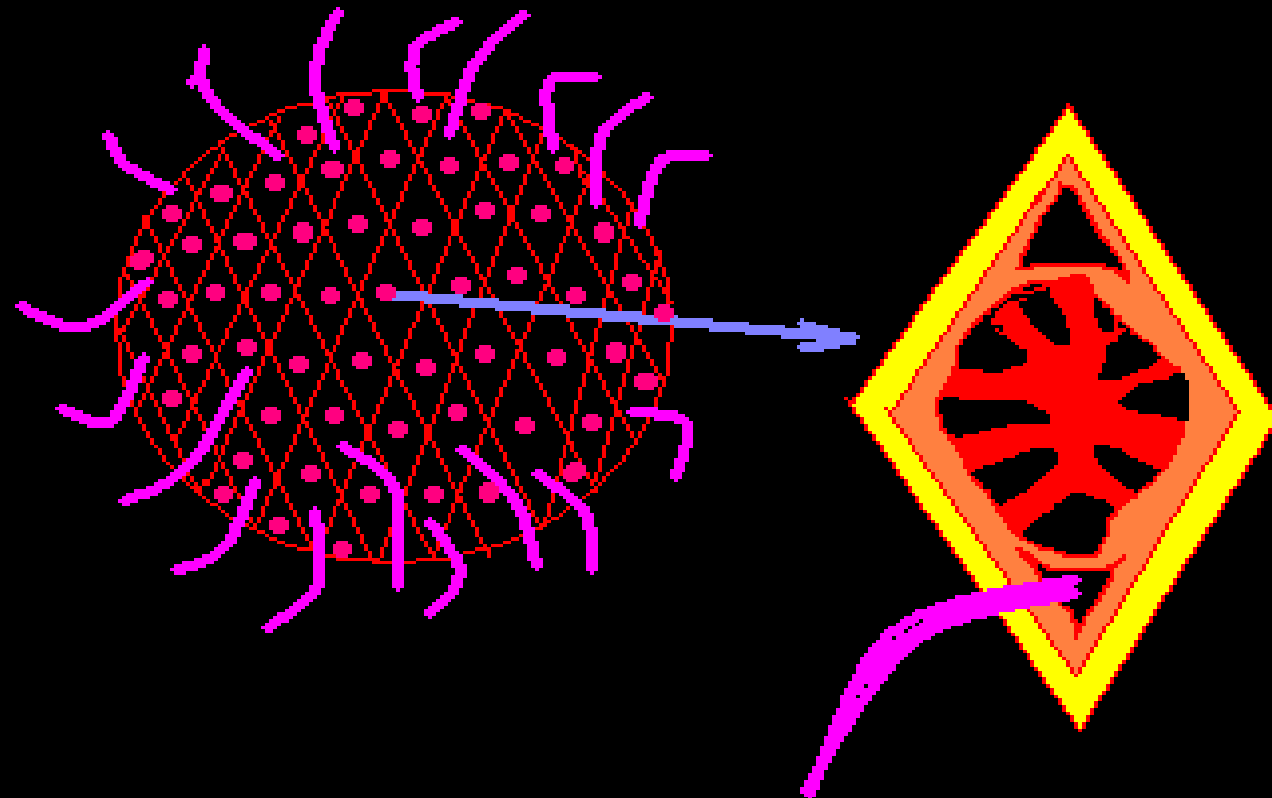
Raised, inturned umbo above
each zooecium



***Cellepora* sp.**

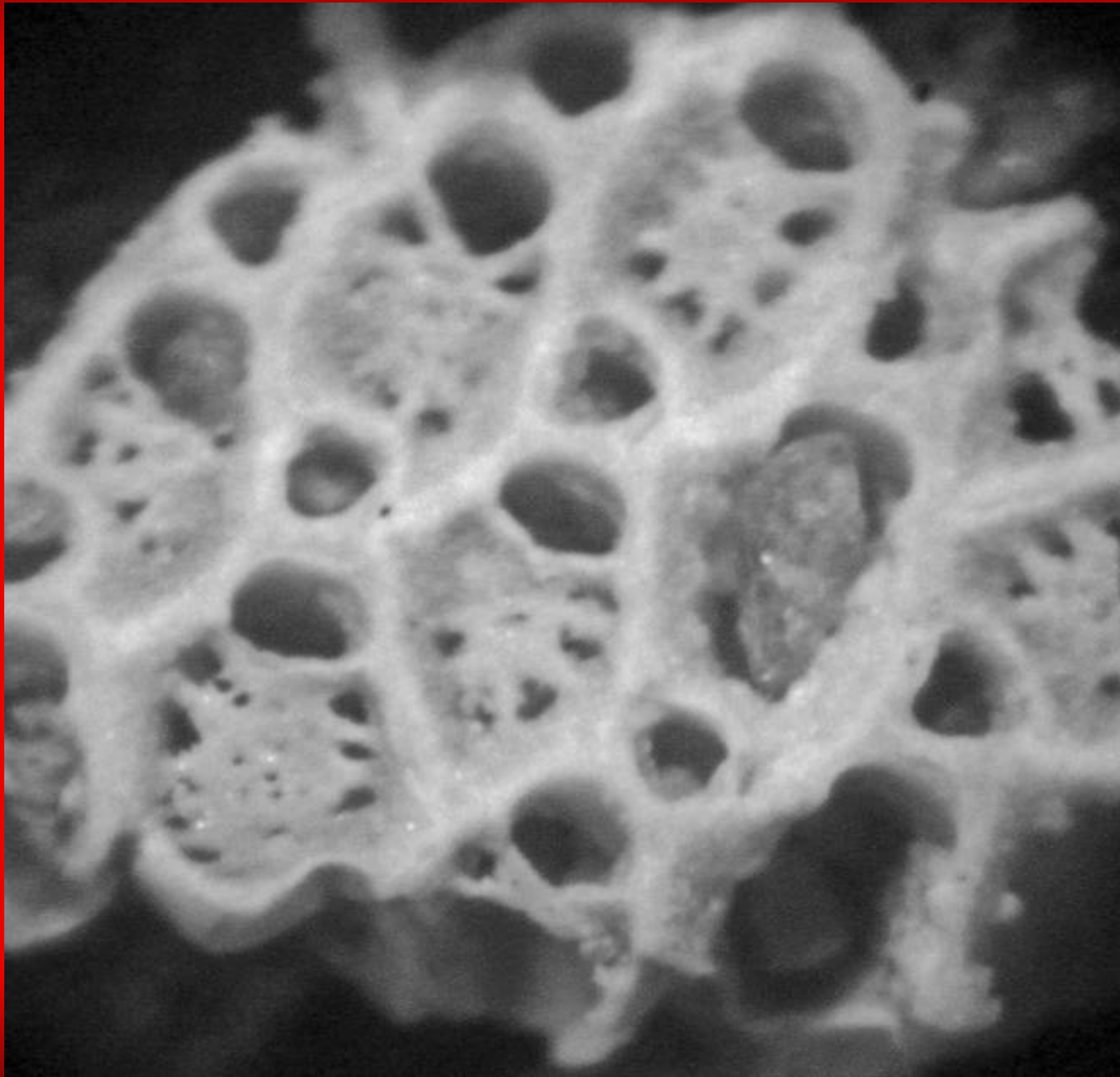


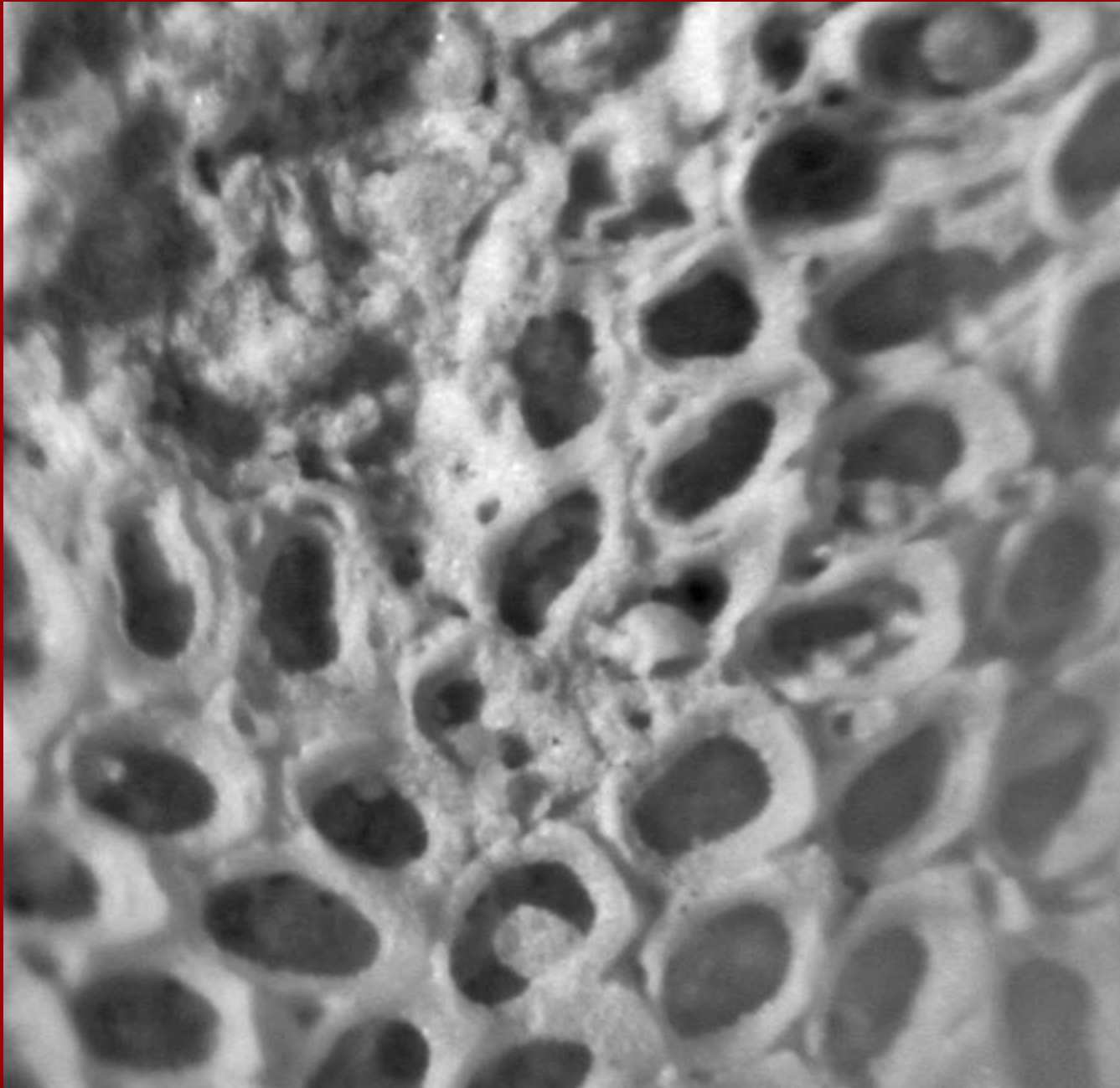
2 mm



setae

Discoporella sp.





Conopeum sp.