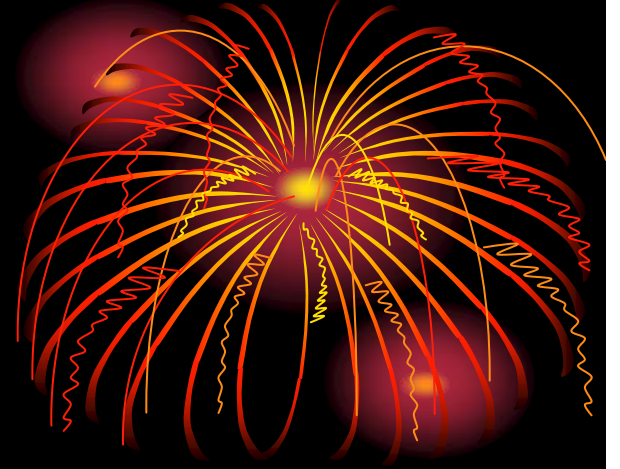




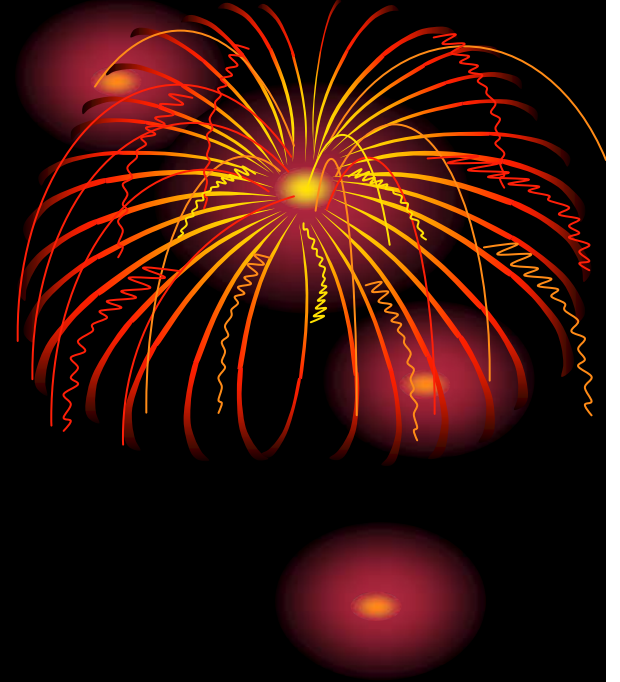
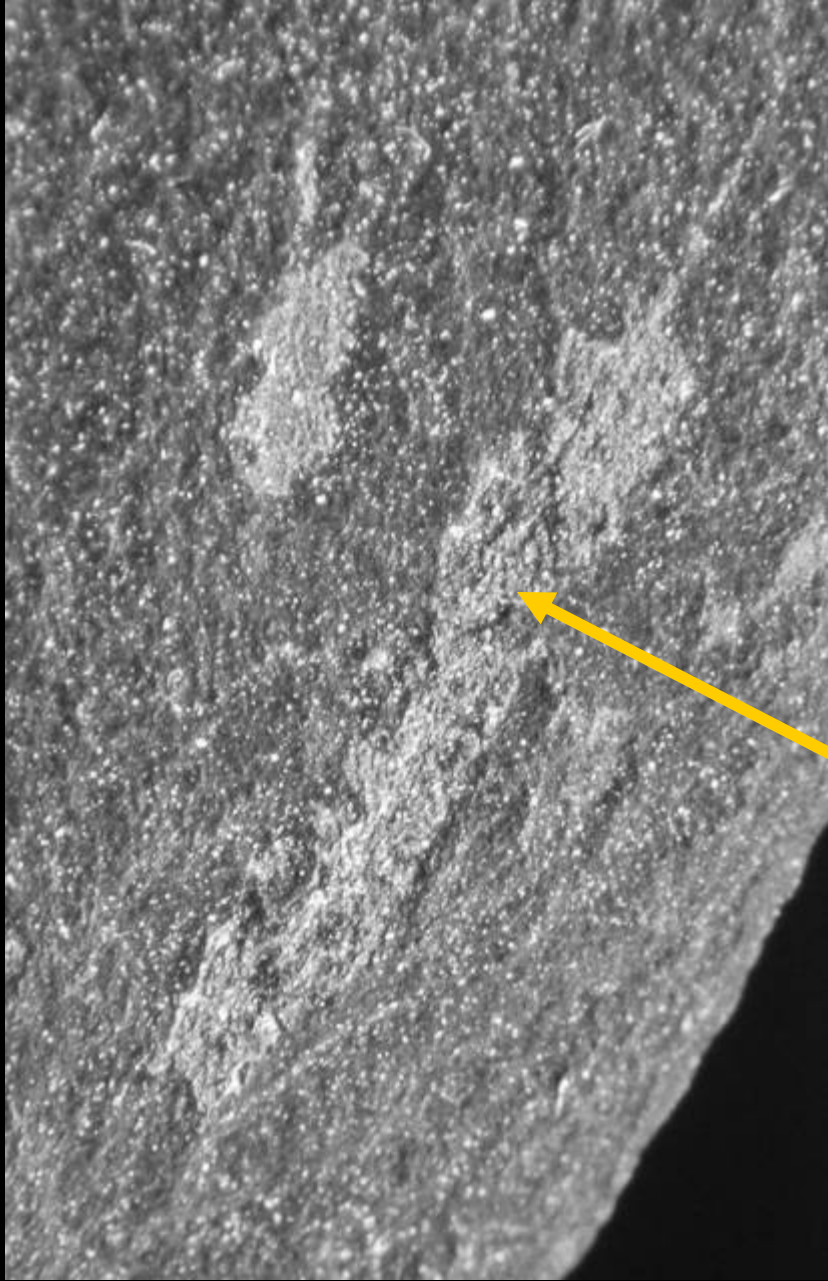
ORDOVICIAN  
GRAPTOLITES,  
CONODONTS &  
CHITINOZOA

*John Baker*

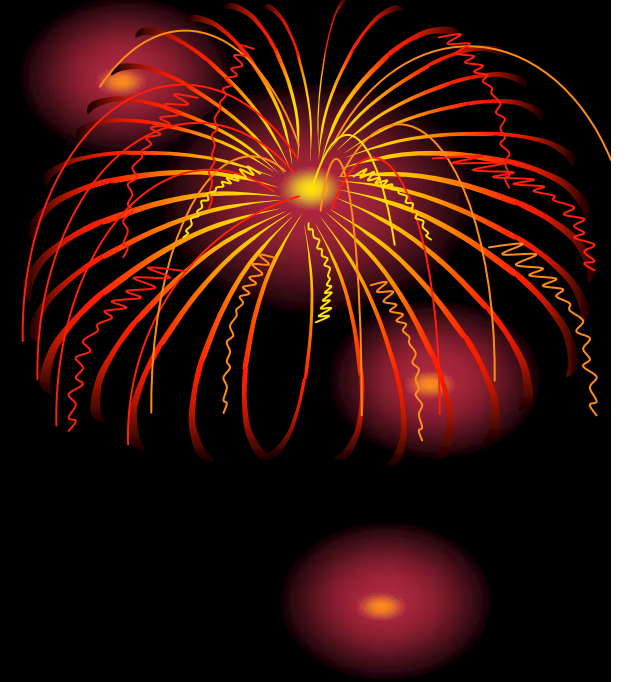
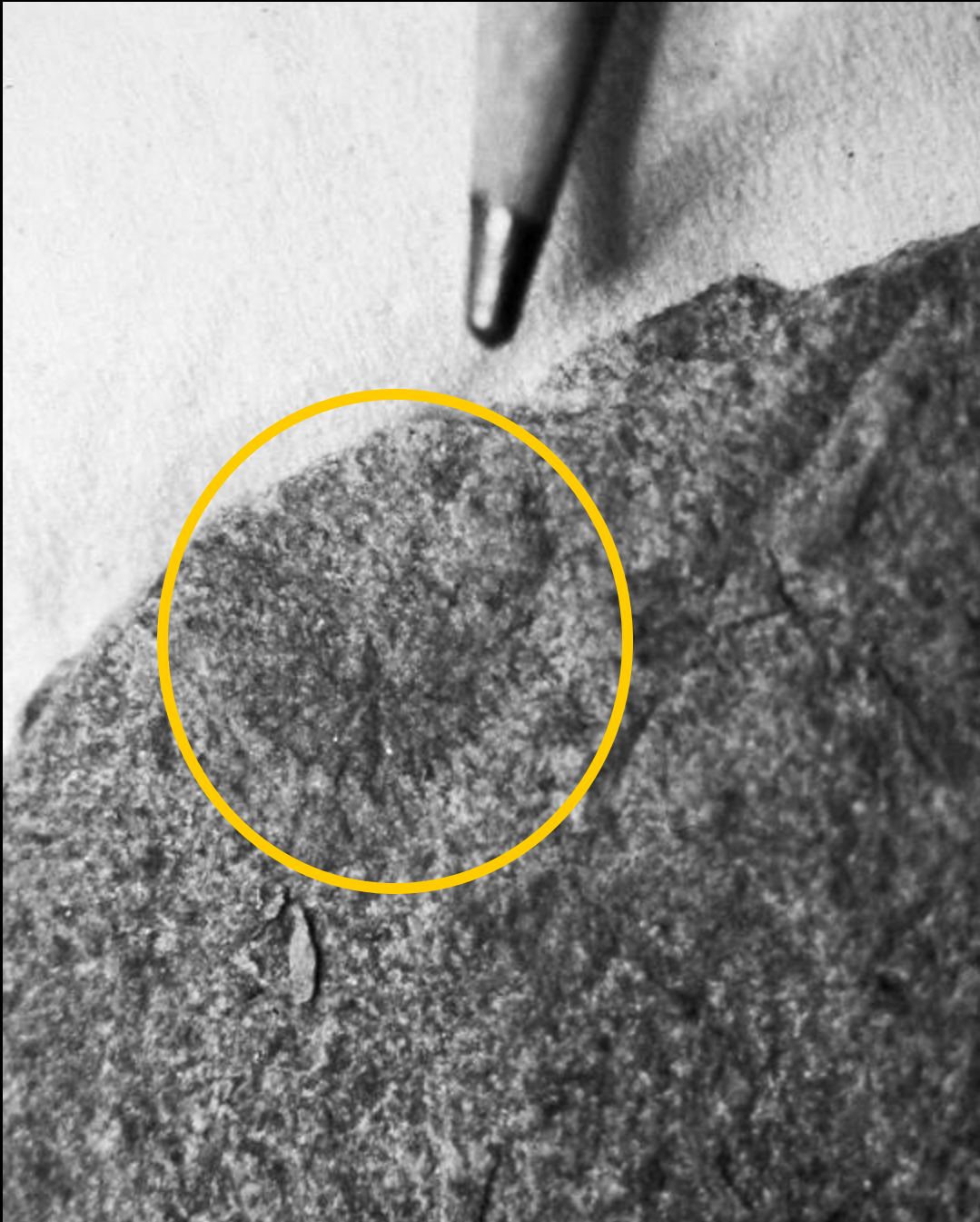


# *Graptolites*

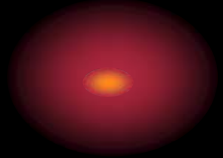
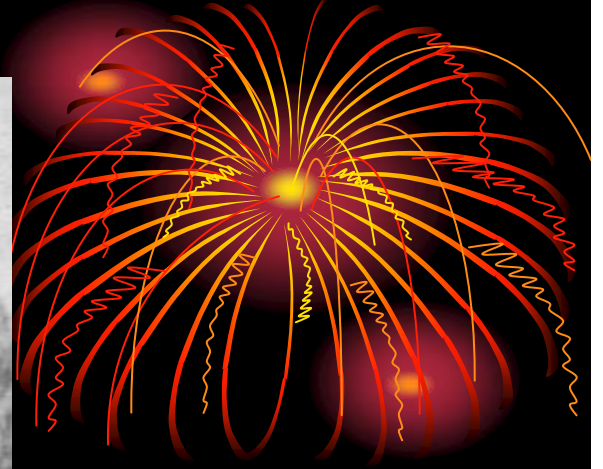
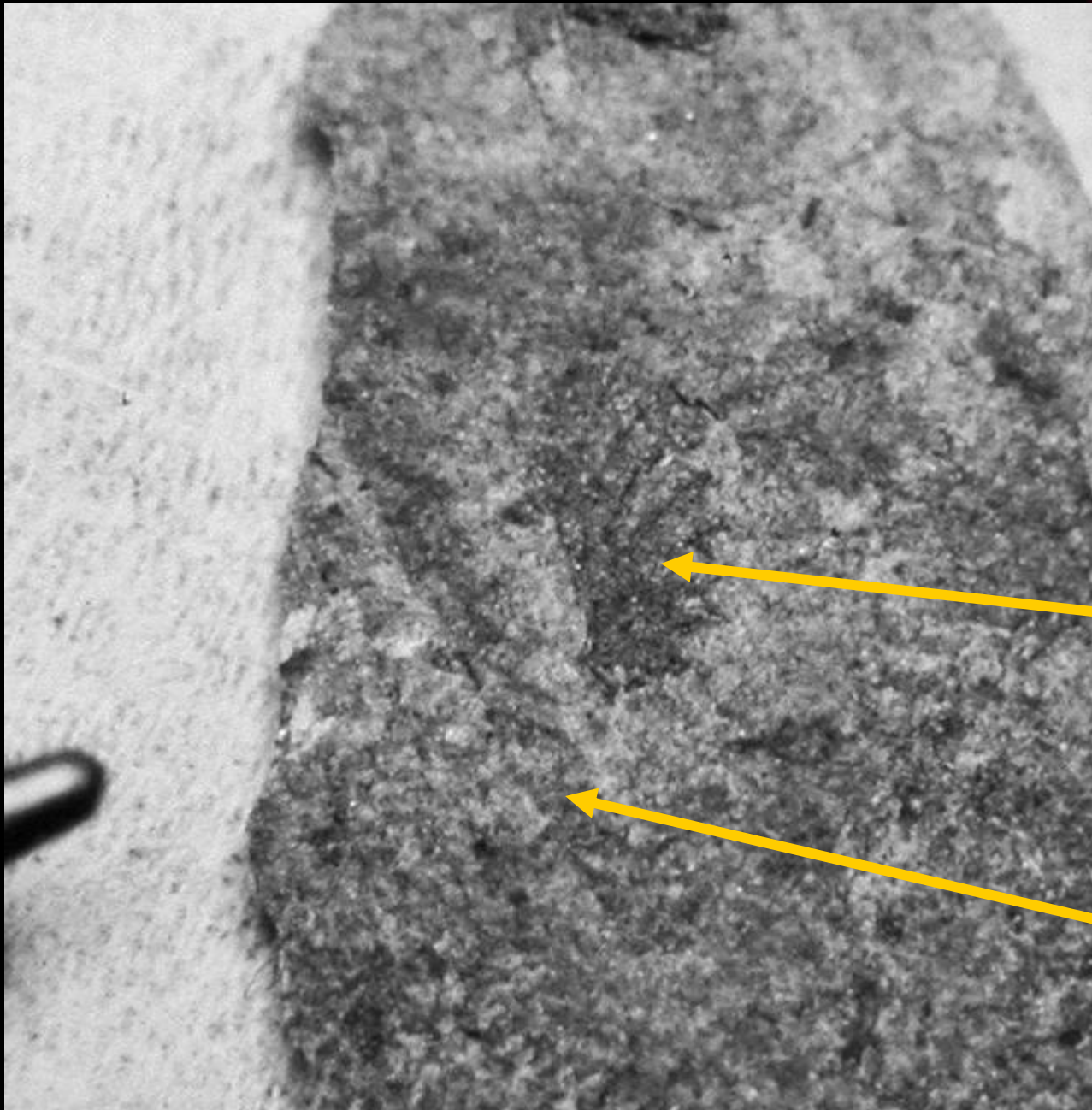
*(Jutland Klippe- Martinsburg  
Fm. - US Rte 78, Warren County,  
NJ)*



***GLYPTOGRAPTUS SP.***

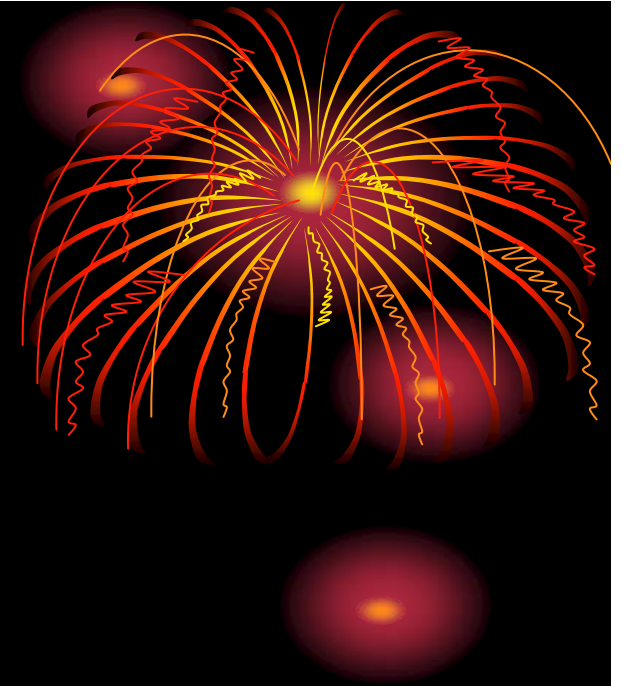
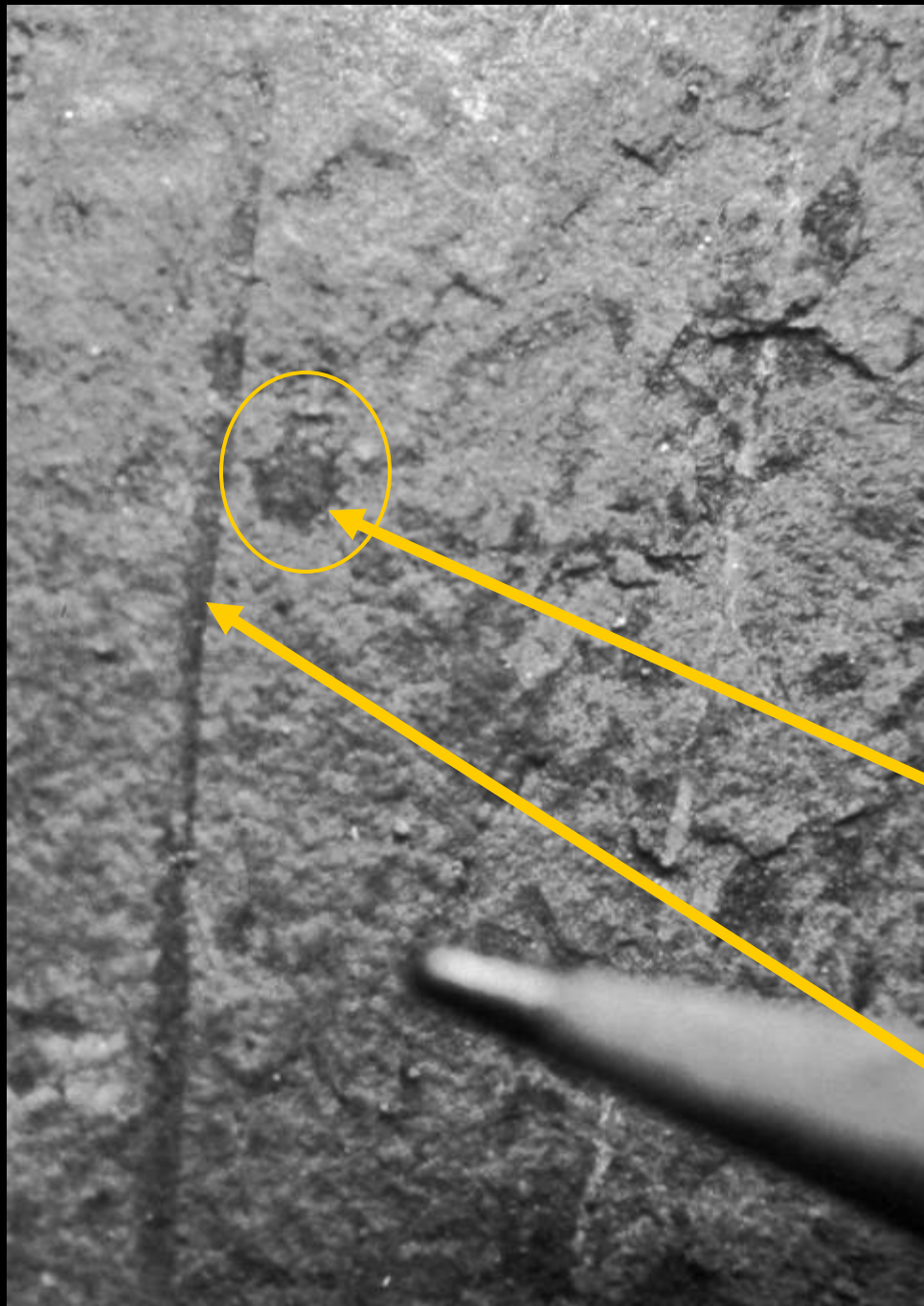


***PHYLLOGRAPTUS SP.***



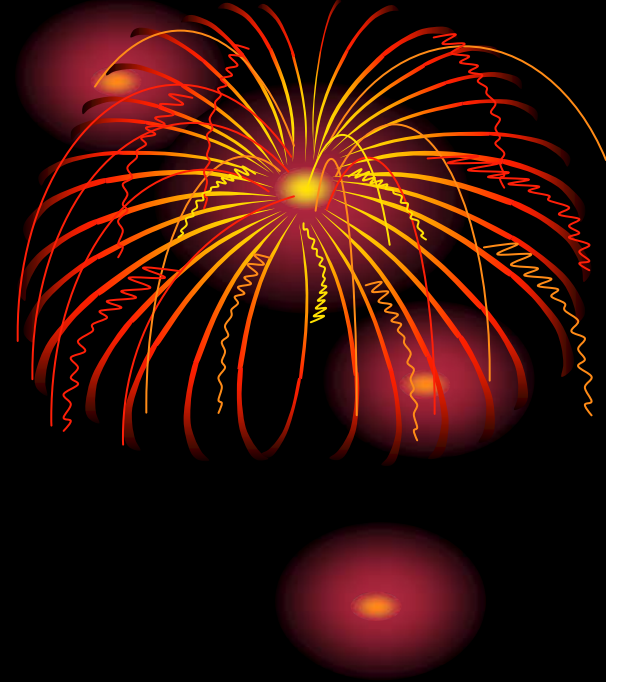
***PHYLLOGRAPTUS SP.***

***CLIMACOGRAPTUS SP.***

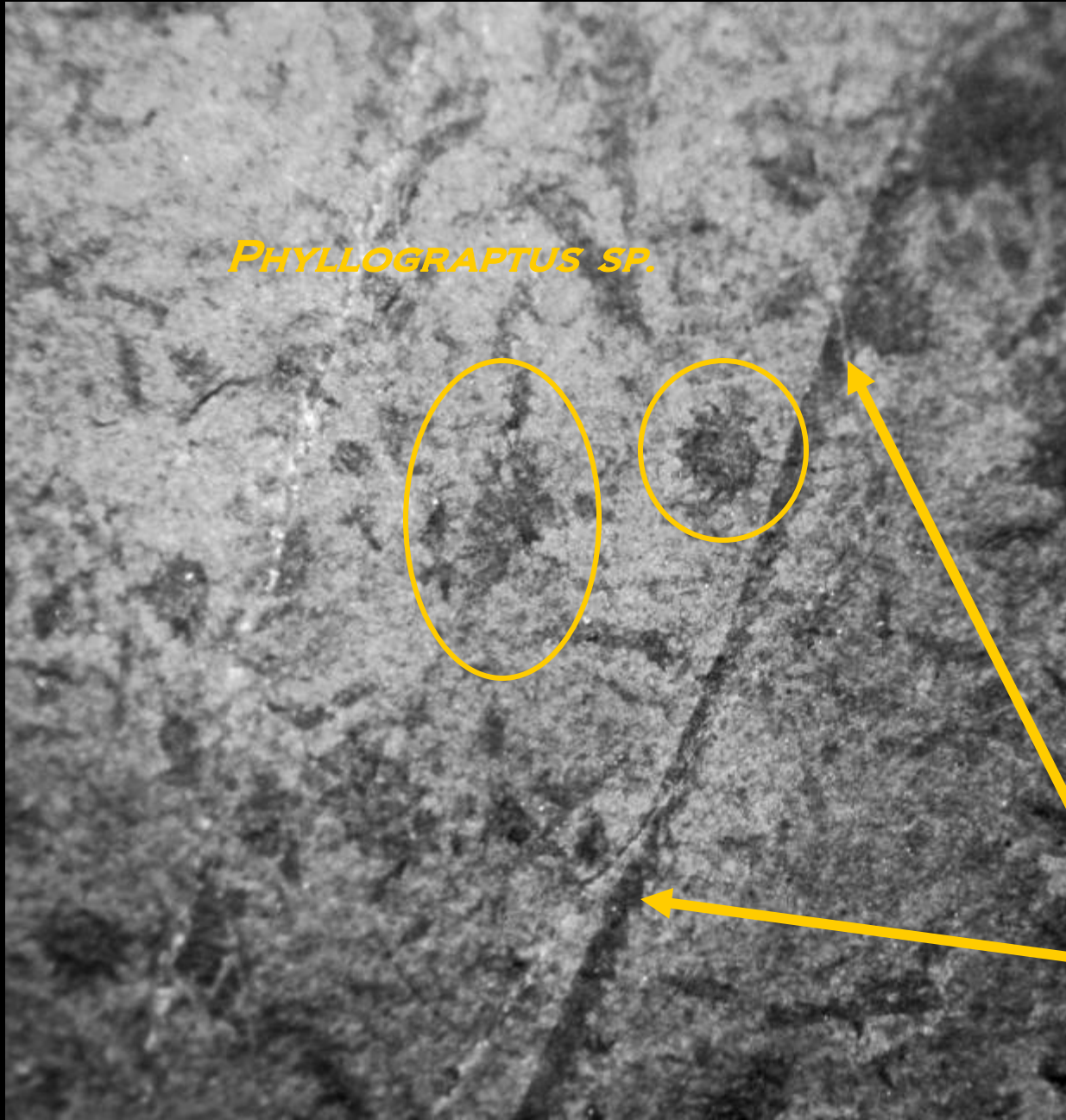


*PHYLLOGRAPTUS SP.*

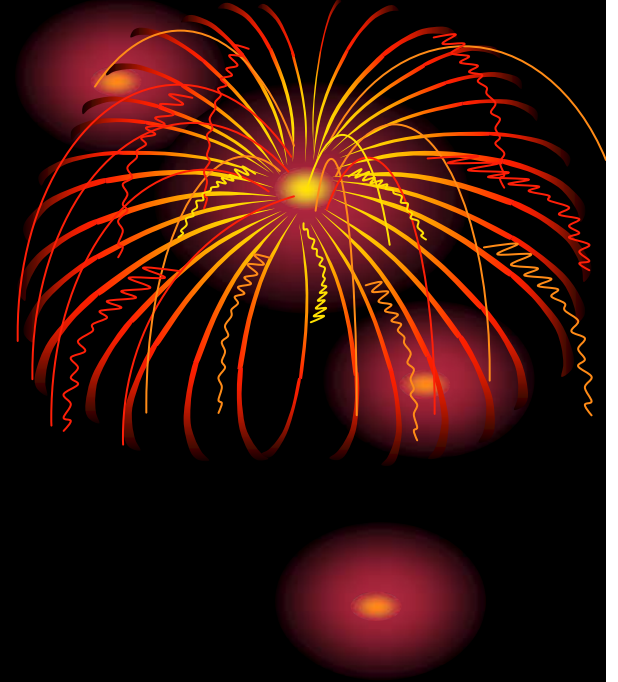
*DIDYMORAPTUS SP.*



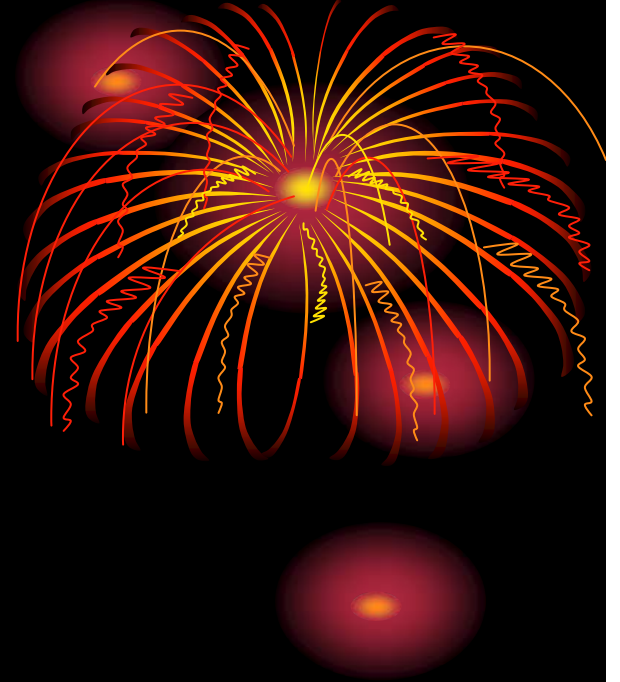
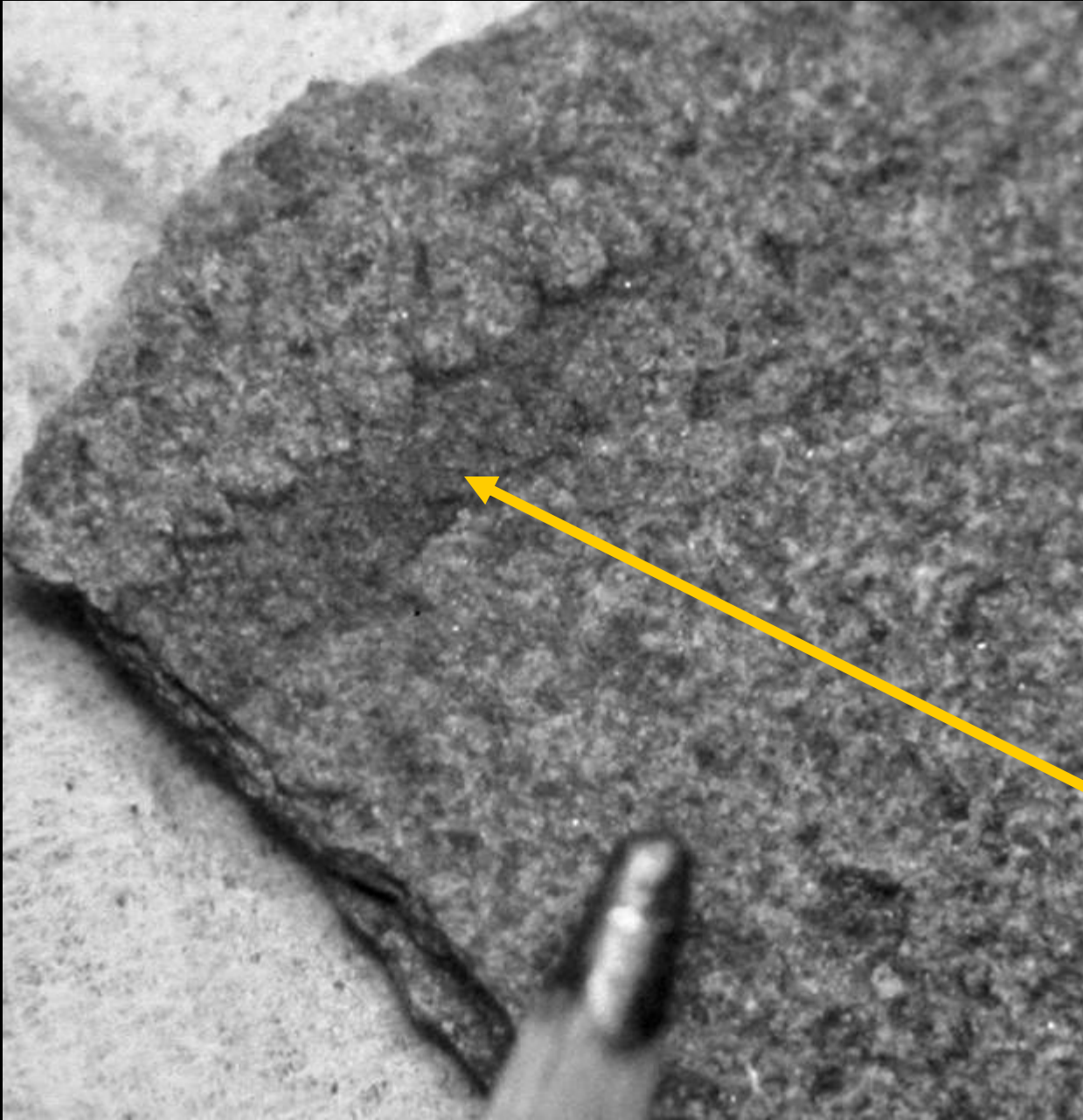
***CLIMACOGRAPTUS SP.***



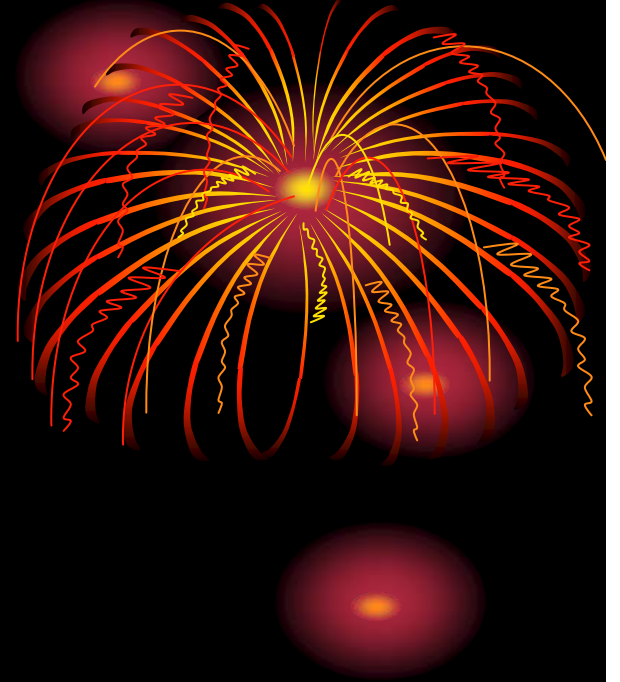
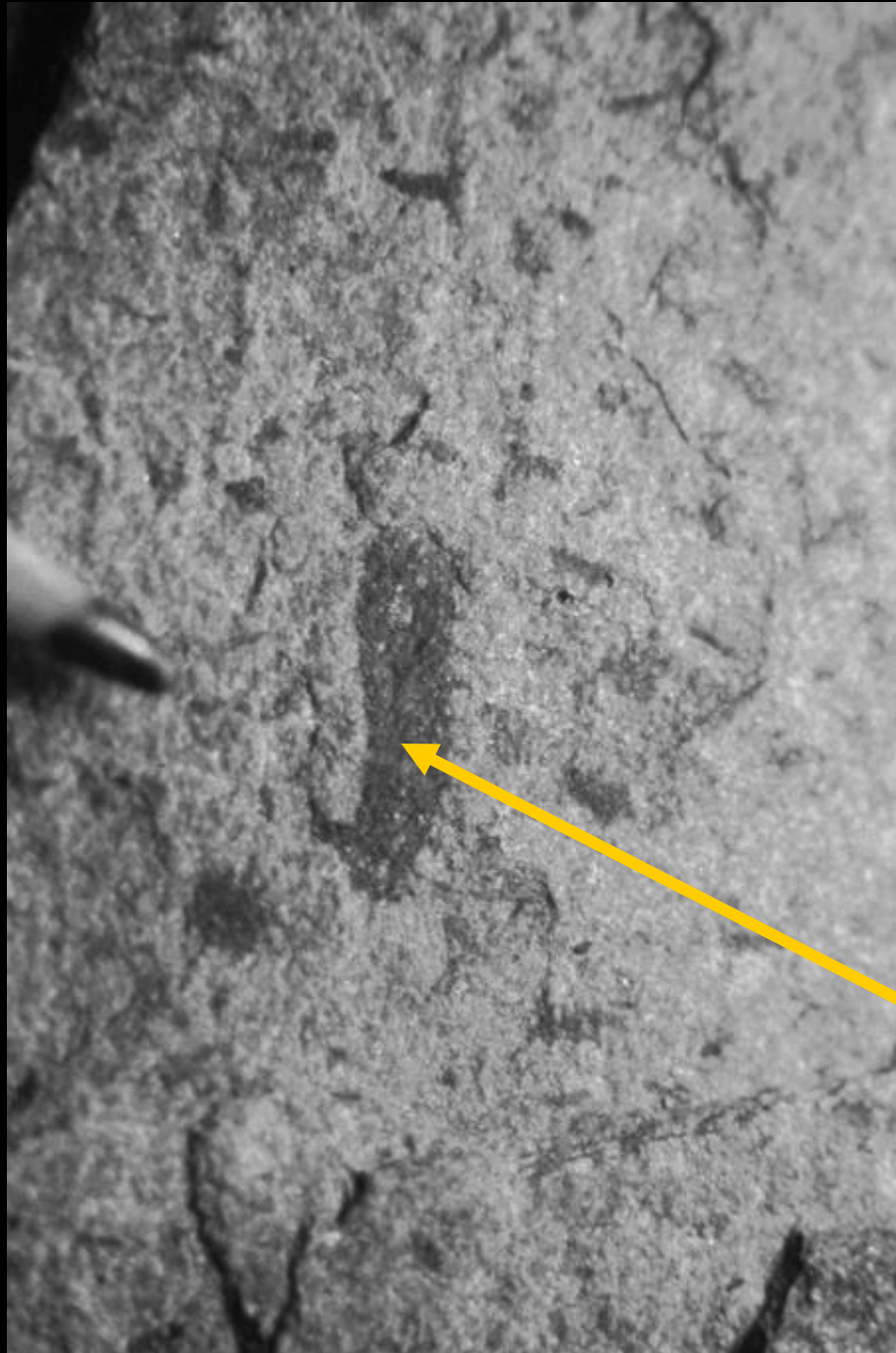
*PHYLLOGRAPTUS SP.*



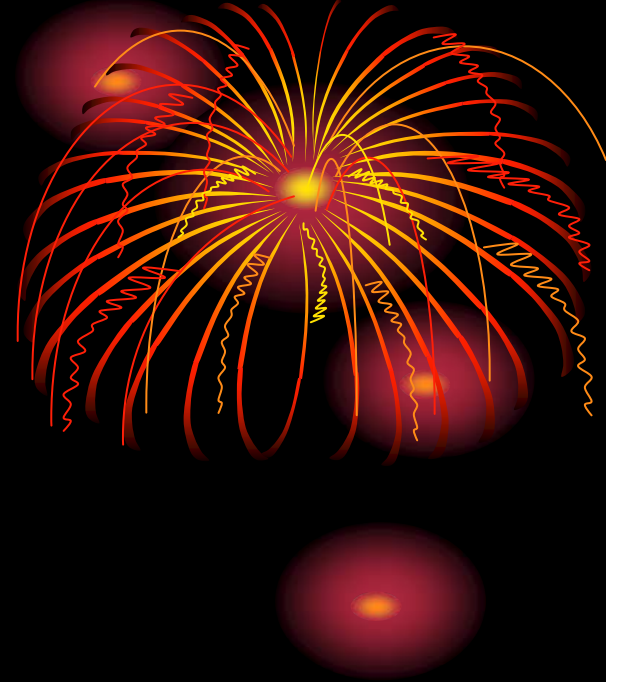
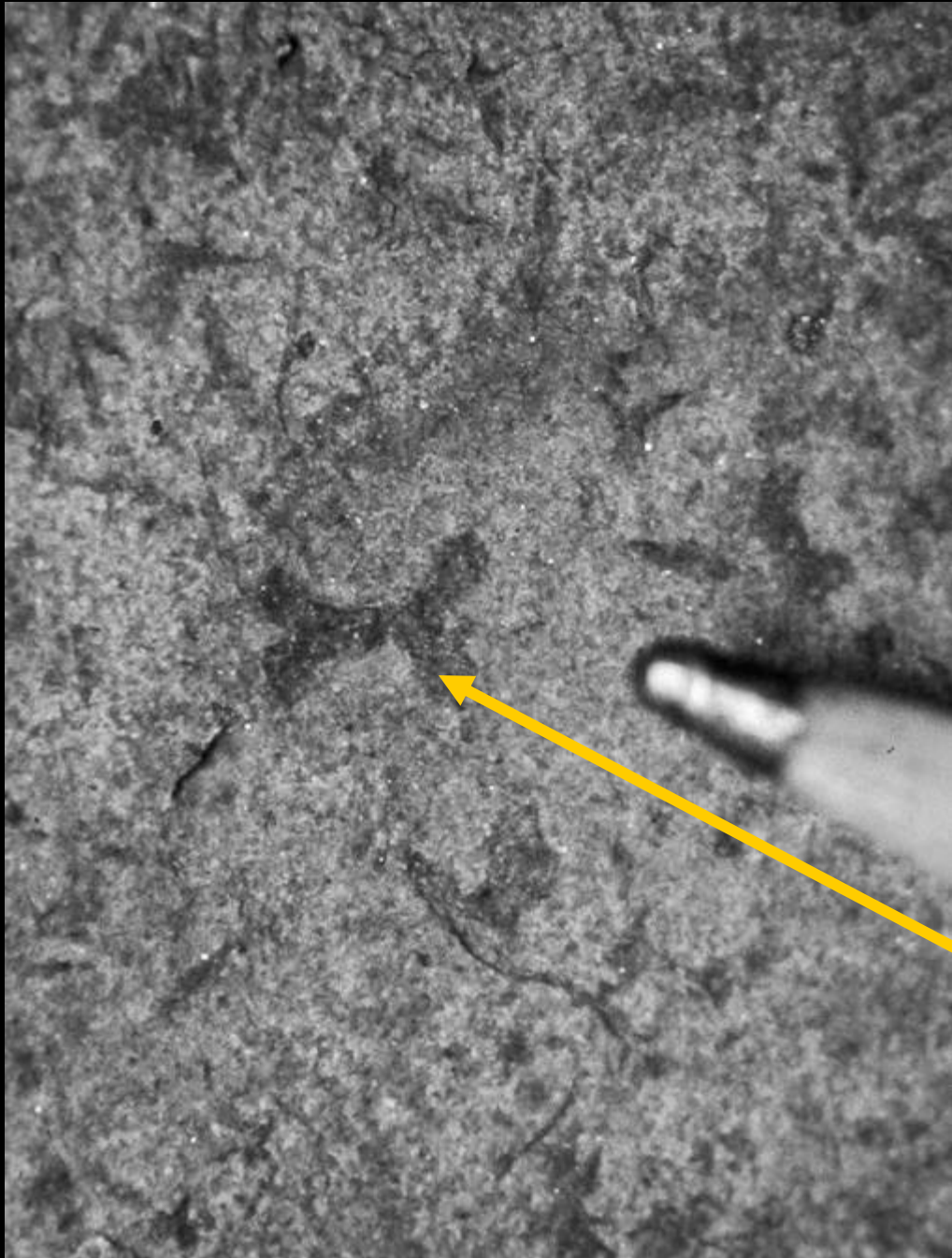
*DIDYMOGRAPTUS  
SP.*



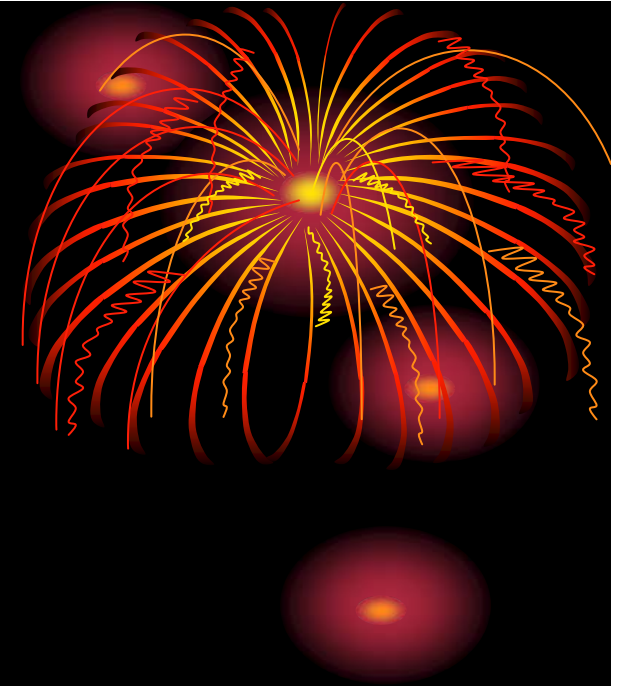
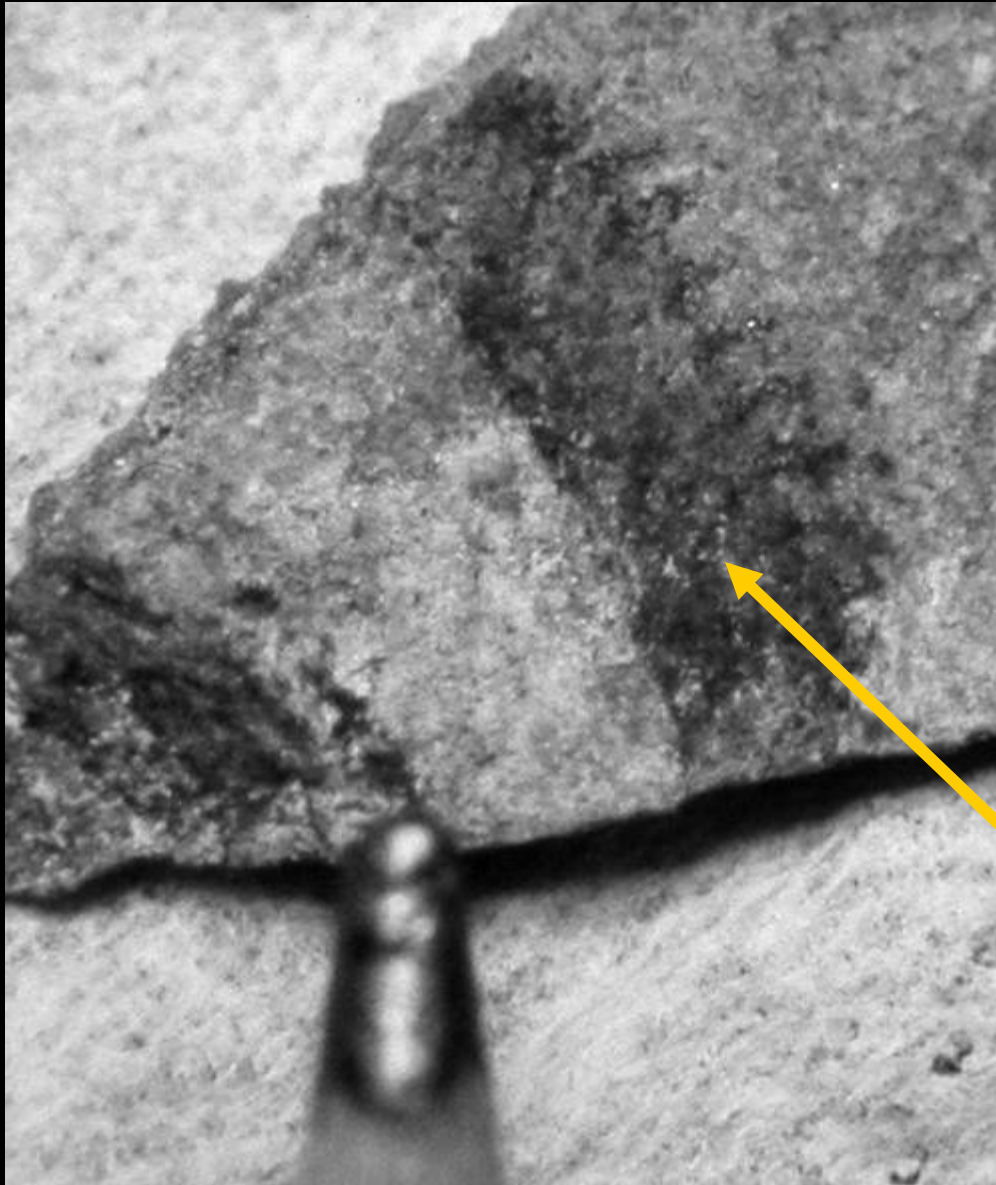
***TETRAGRAPTUS SP.***



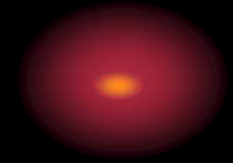
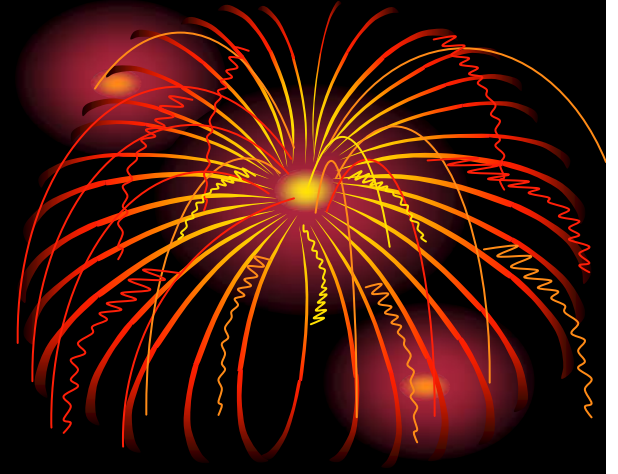
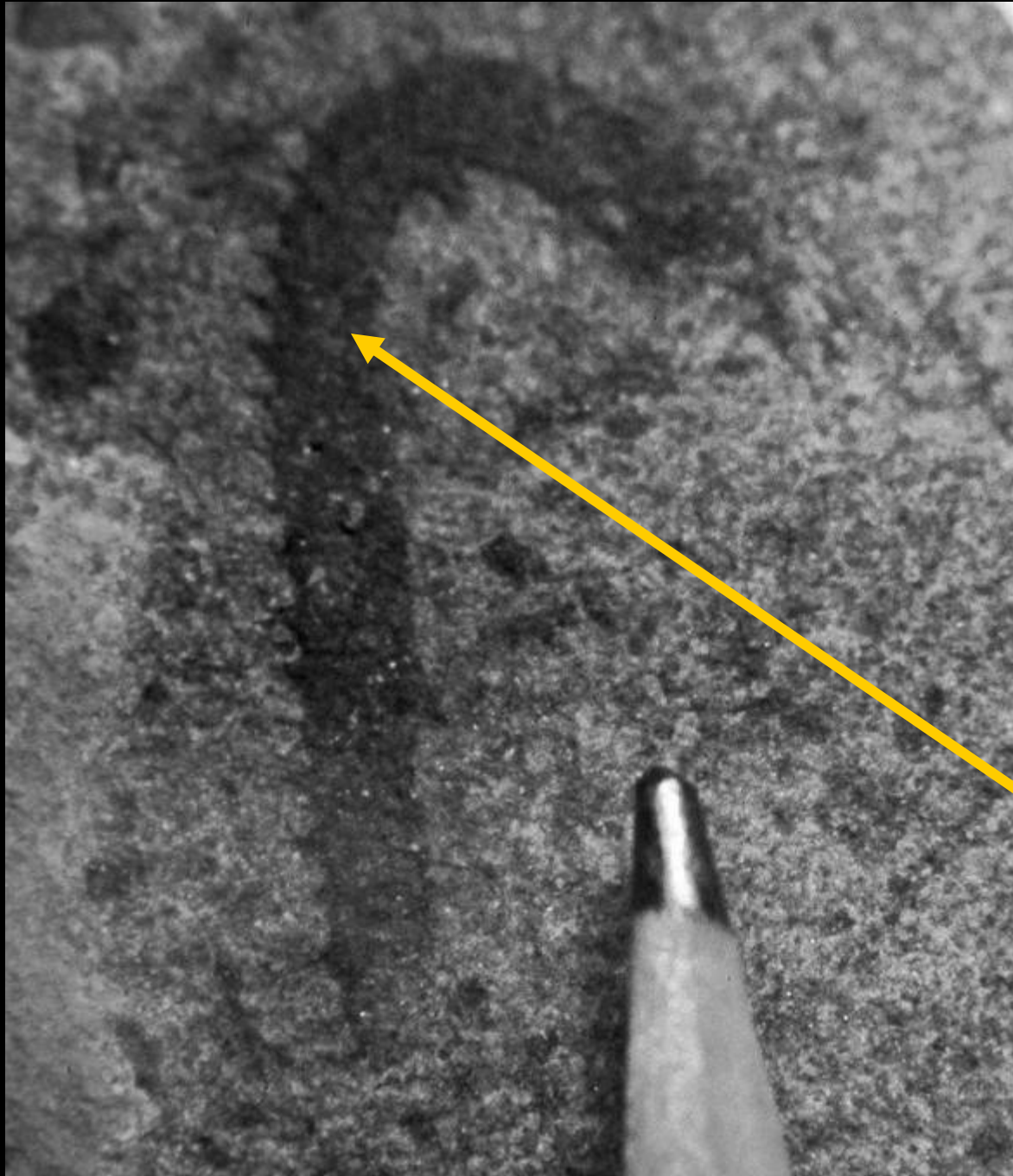
***TETRAGRAPTUS SP.***



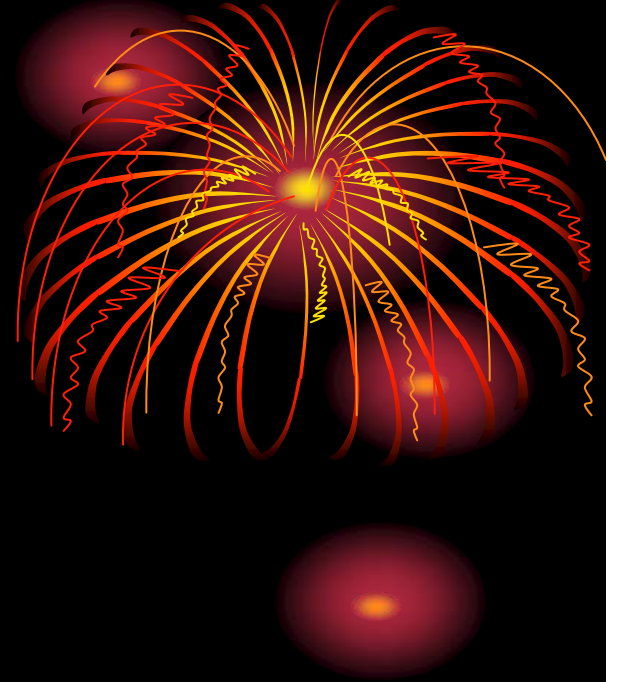
***TETRAGRAPTUS SP.***



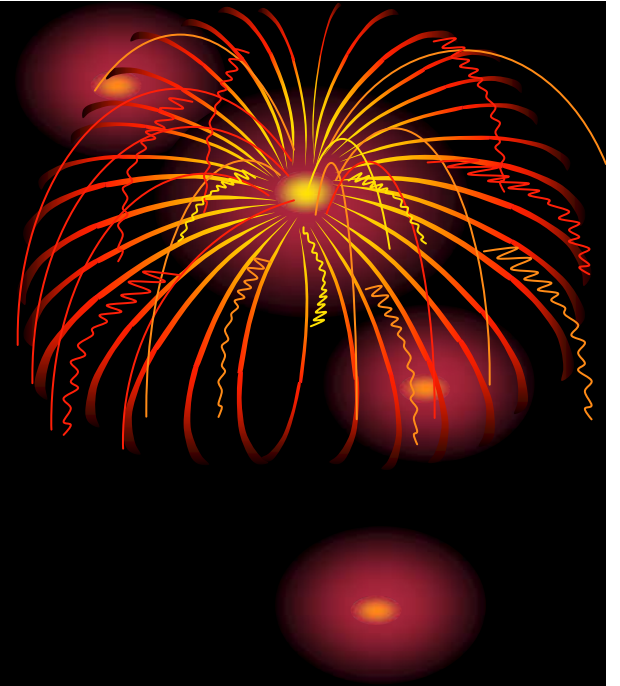
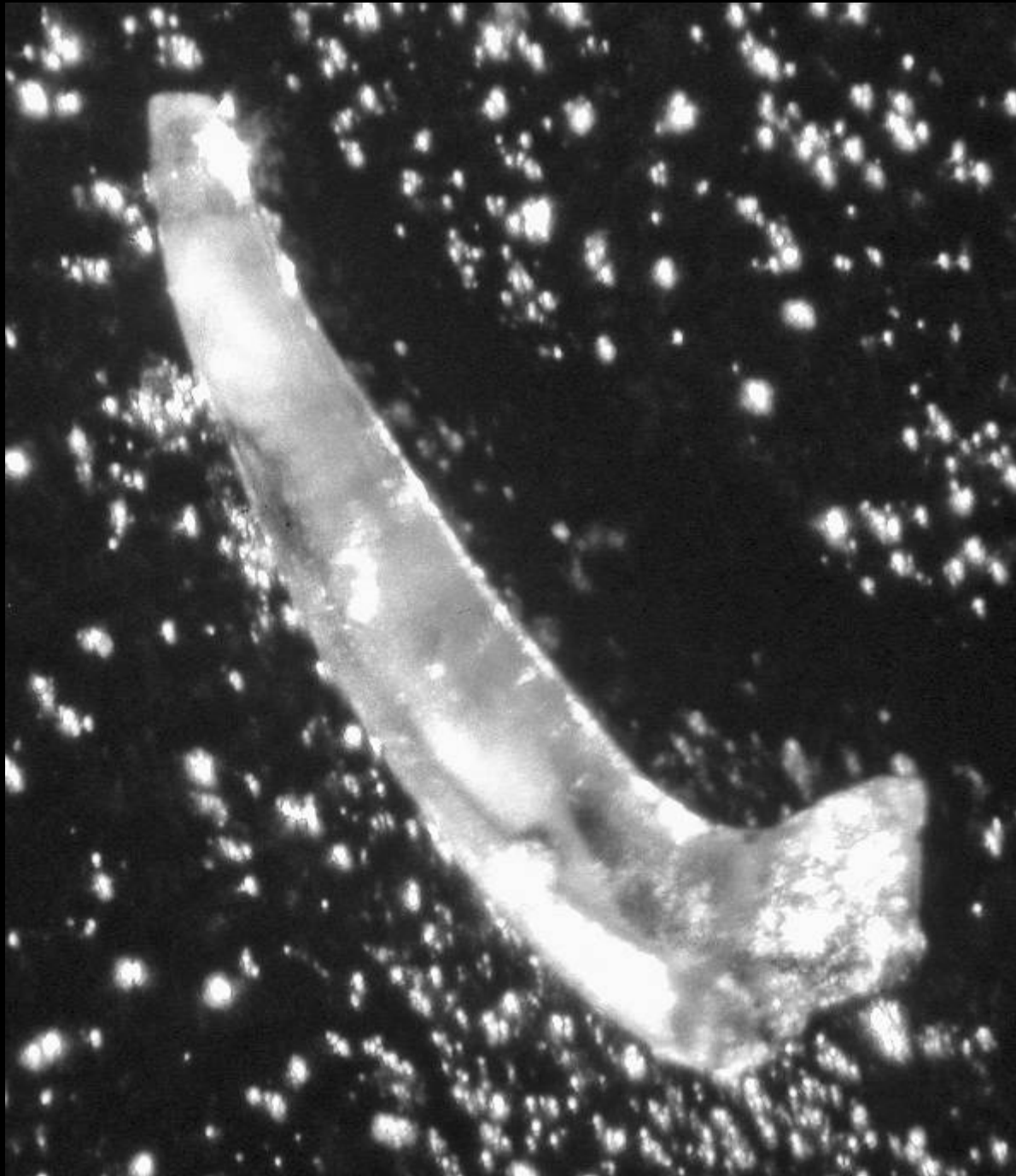
***TETRAGRAPTUS SP.***



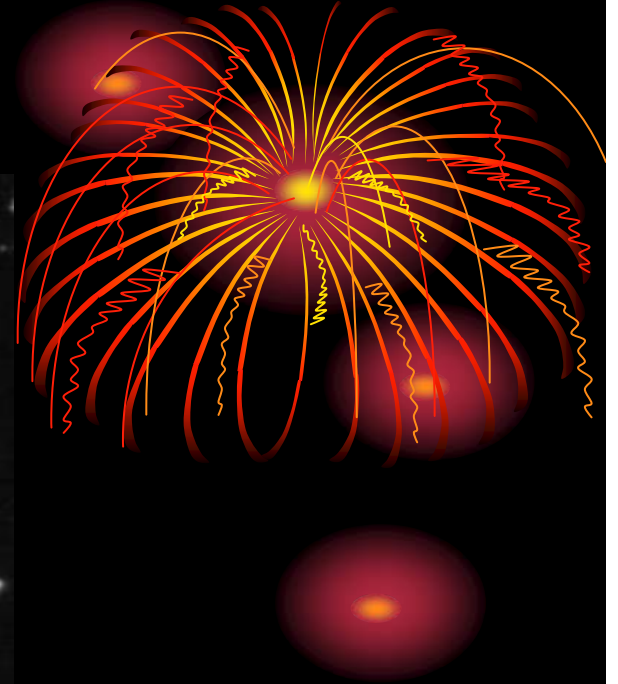
***TETRAGRAPTUS SP.***



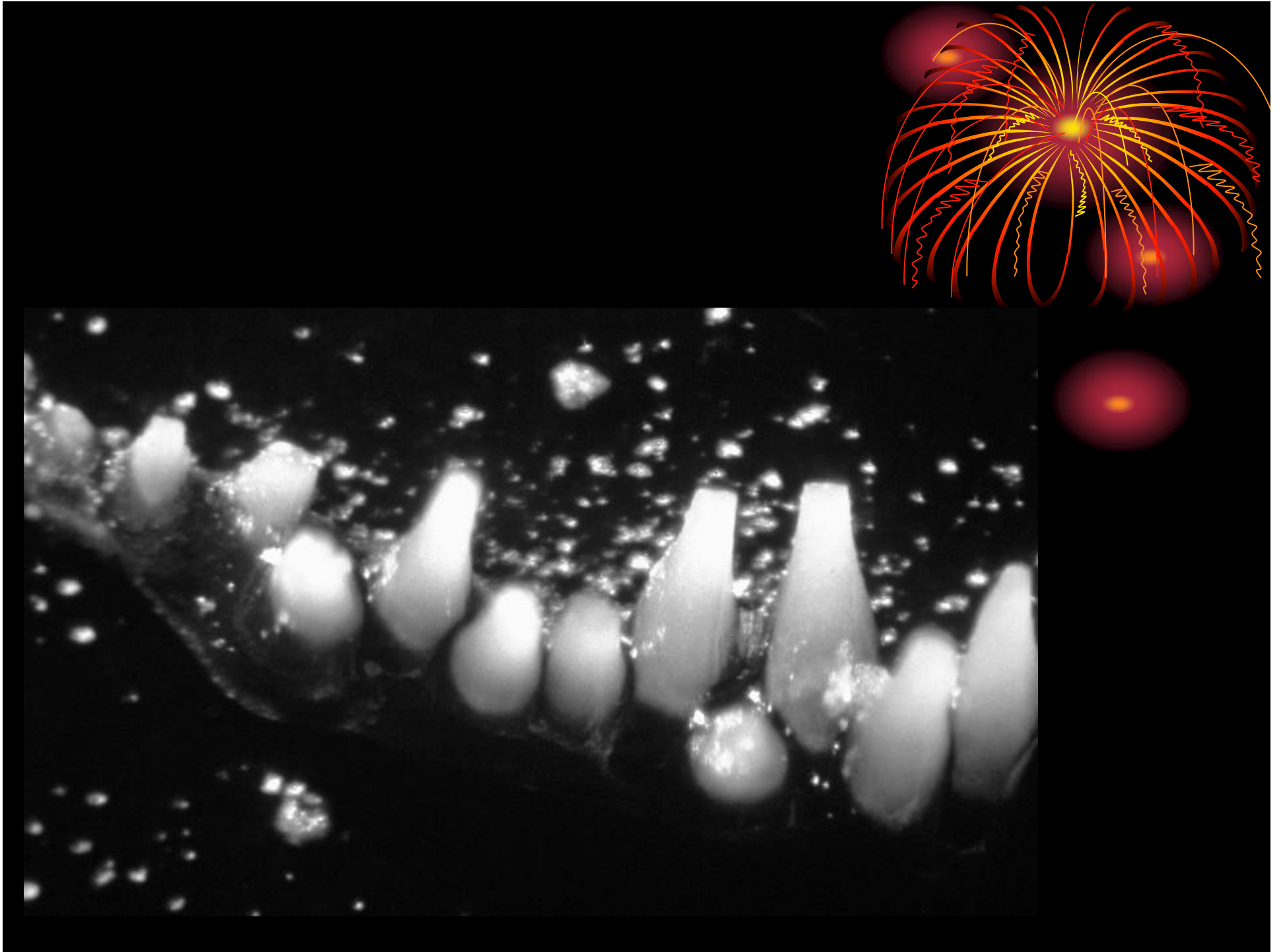
# *Conodonts*



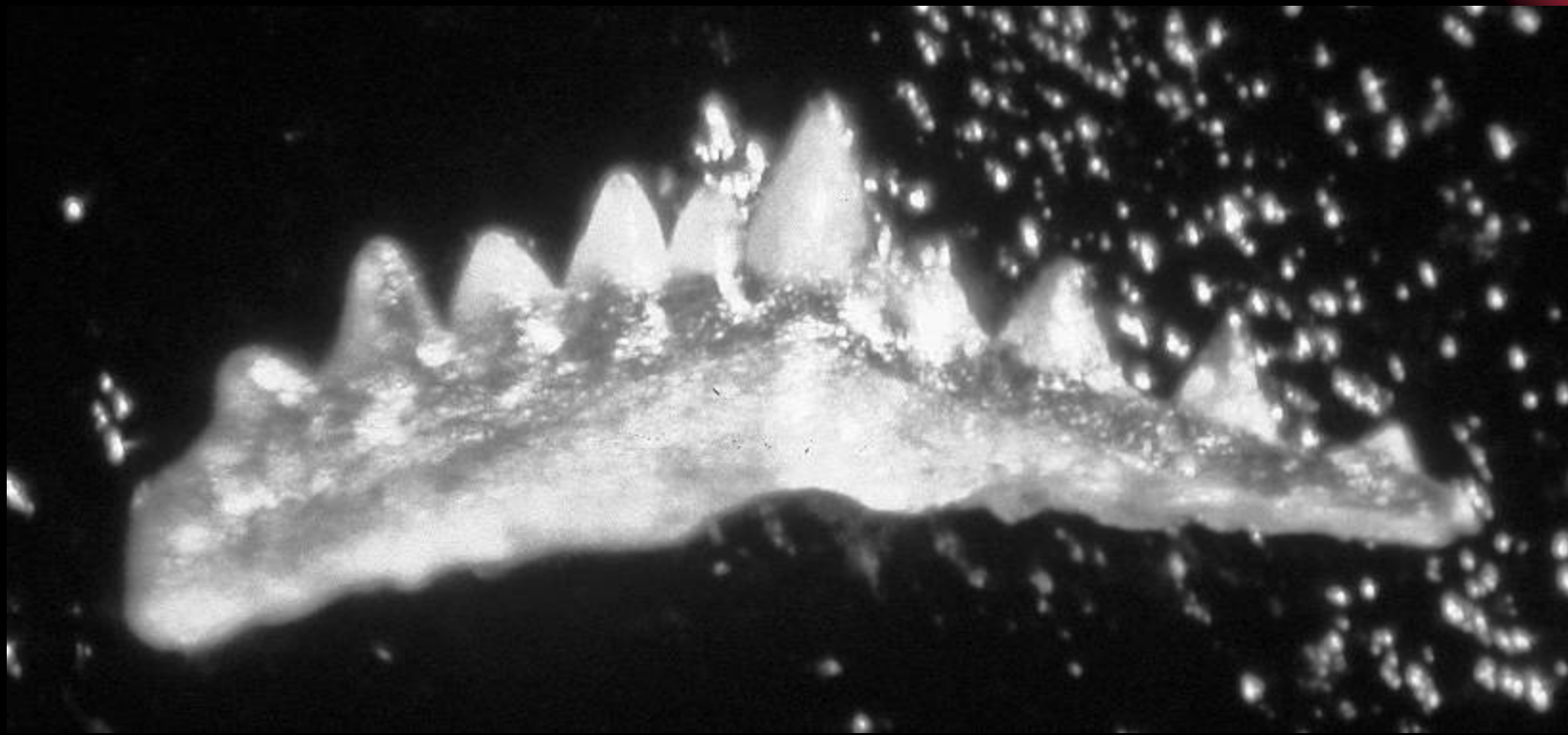
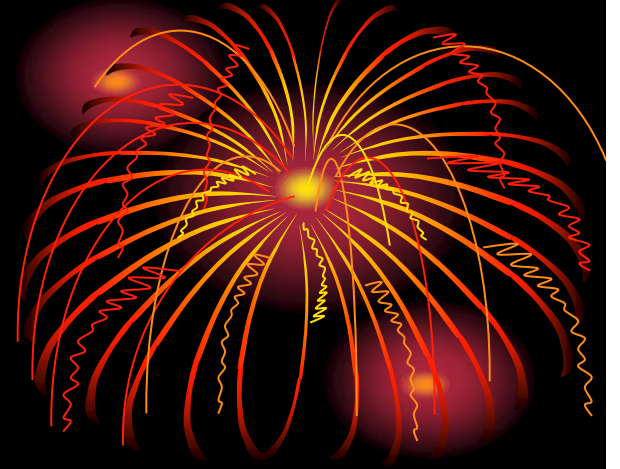
Paltodus sp



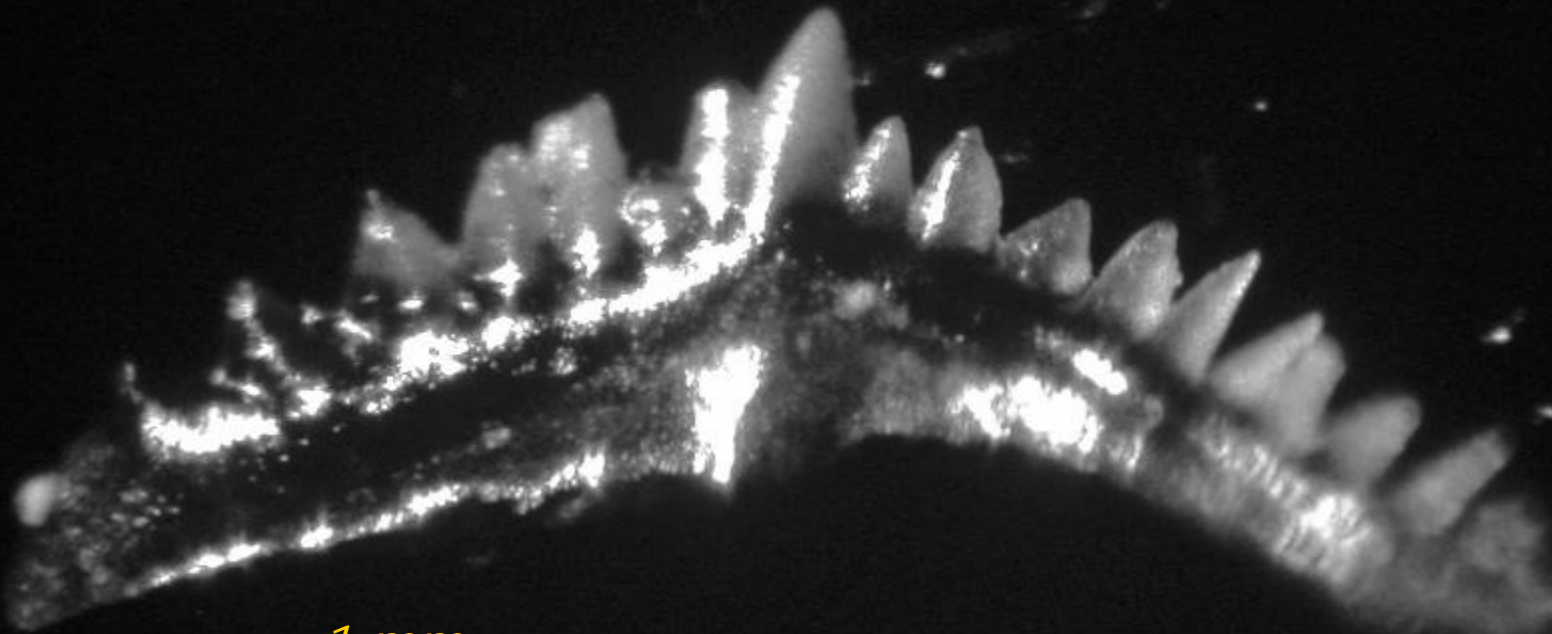
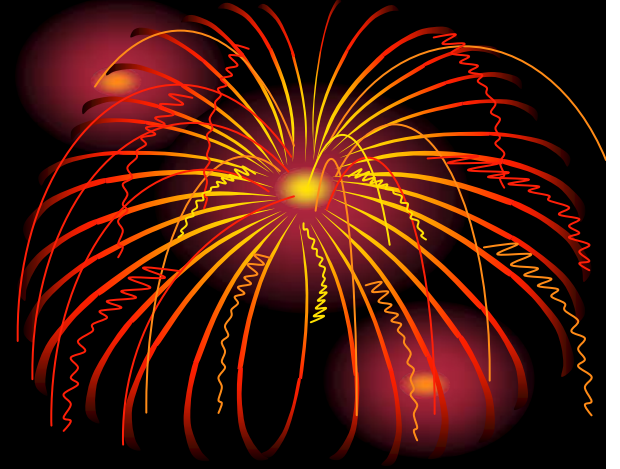
Prionodus sp



Aphelognathus sp

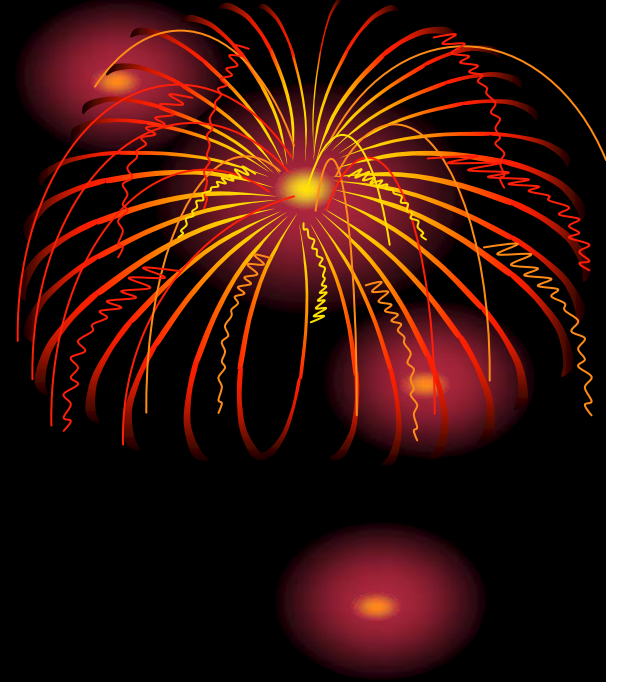


Rhodesognathus sp



1 mm

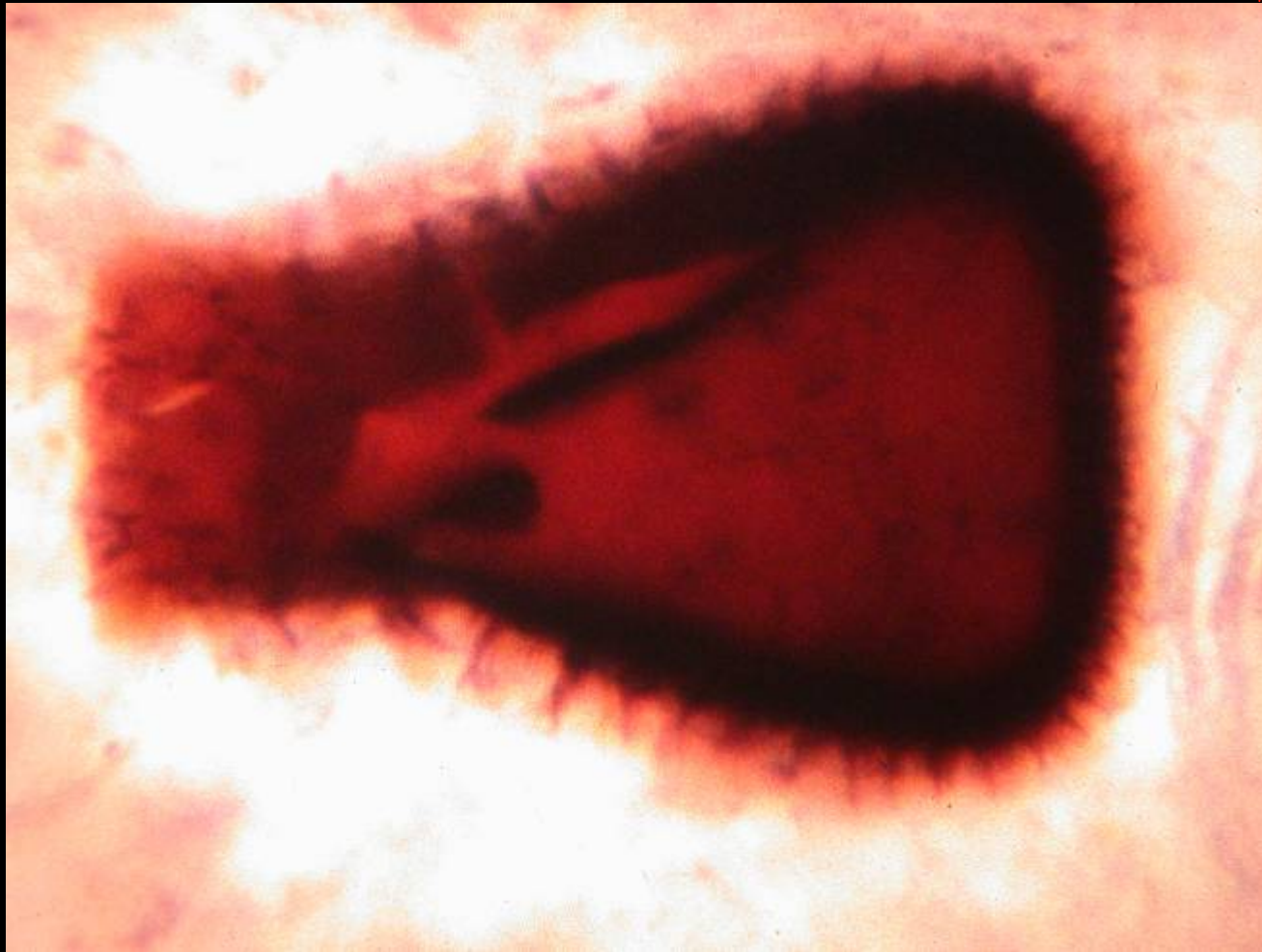
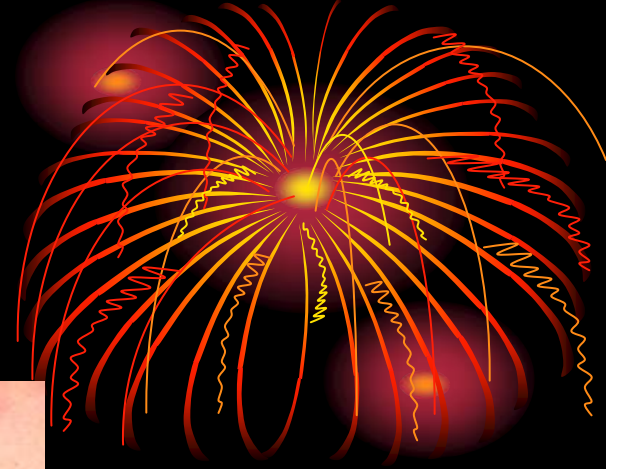




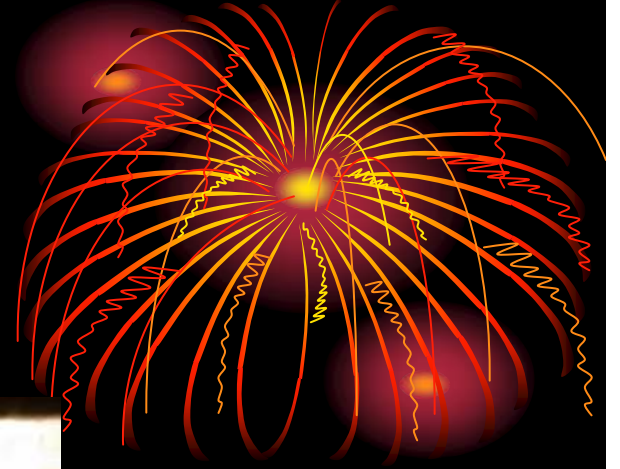
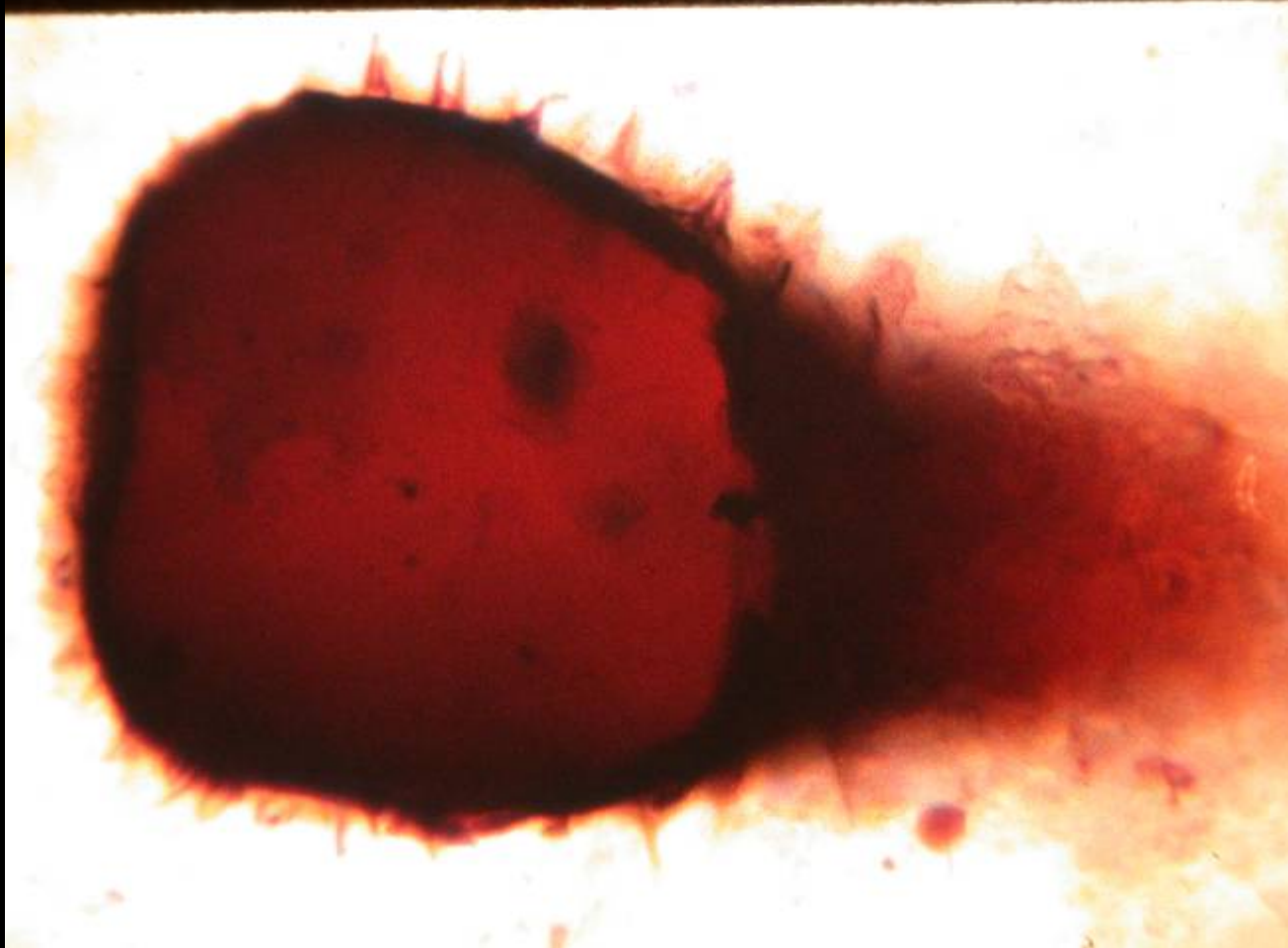
# *Chitinozoa*

*( Oklahoma- Bromide Fm., Simpson Gp. )*

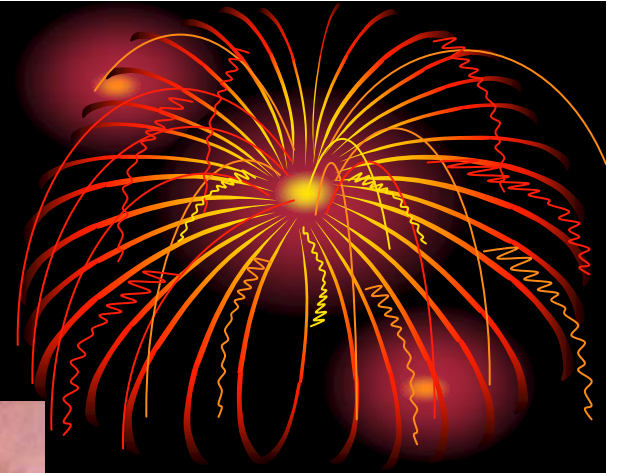
500  $\mu\text{m}$



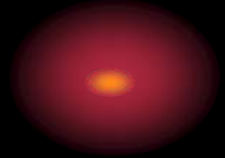
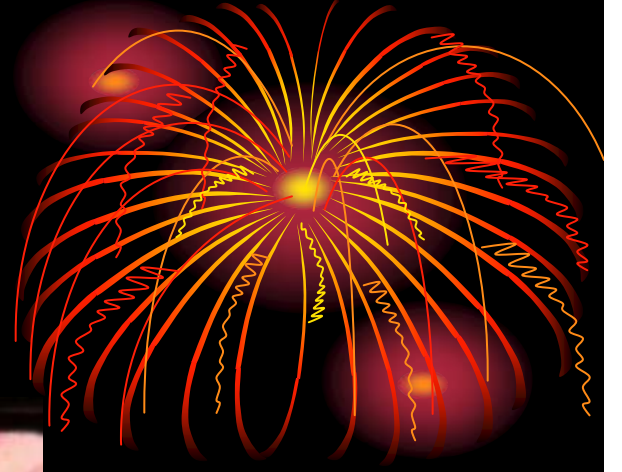
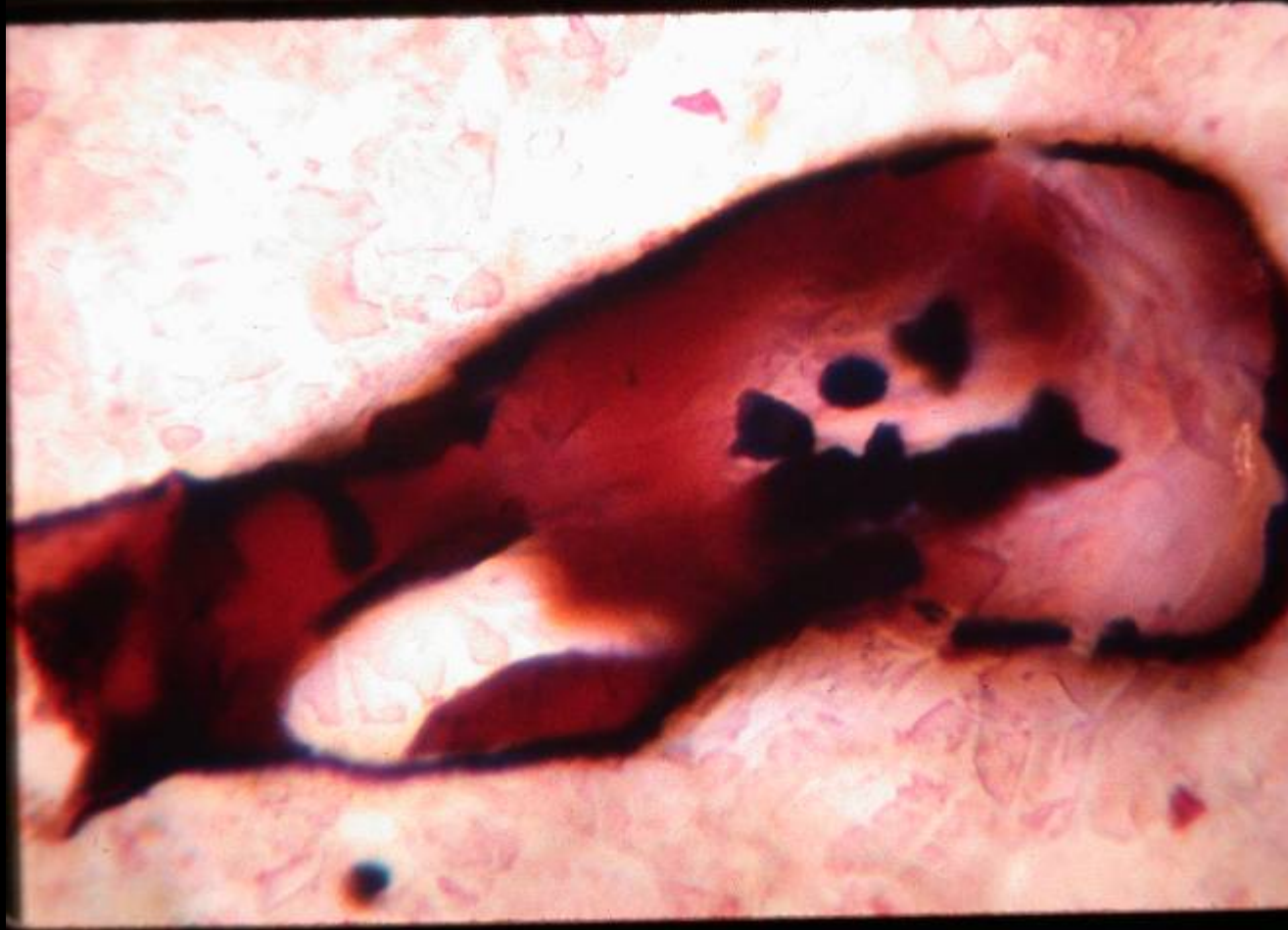
Conochitina-  
Herochitina  
complex

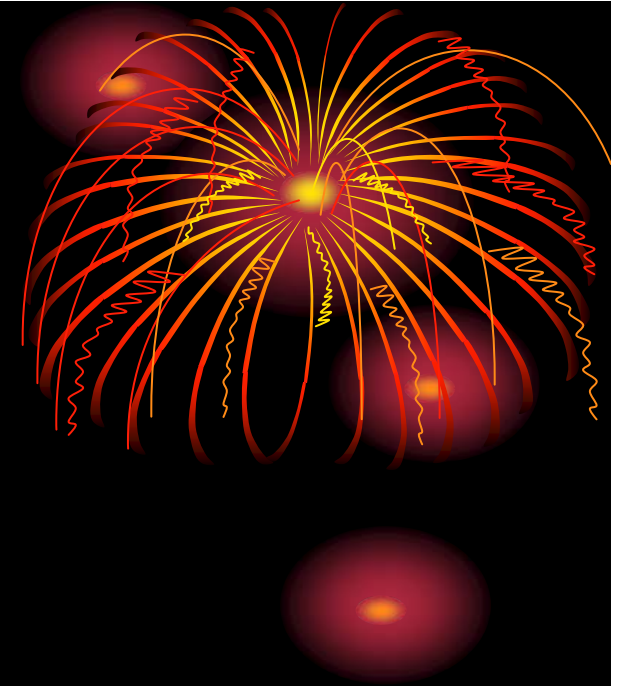
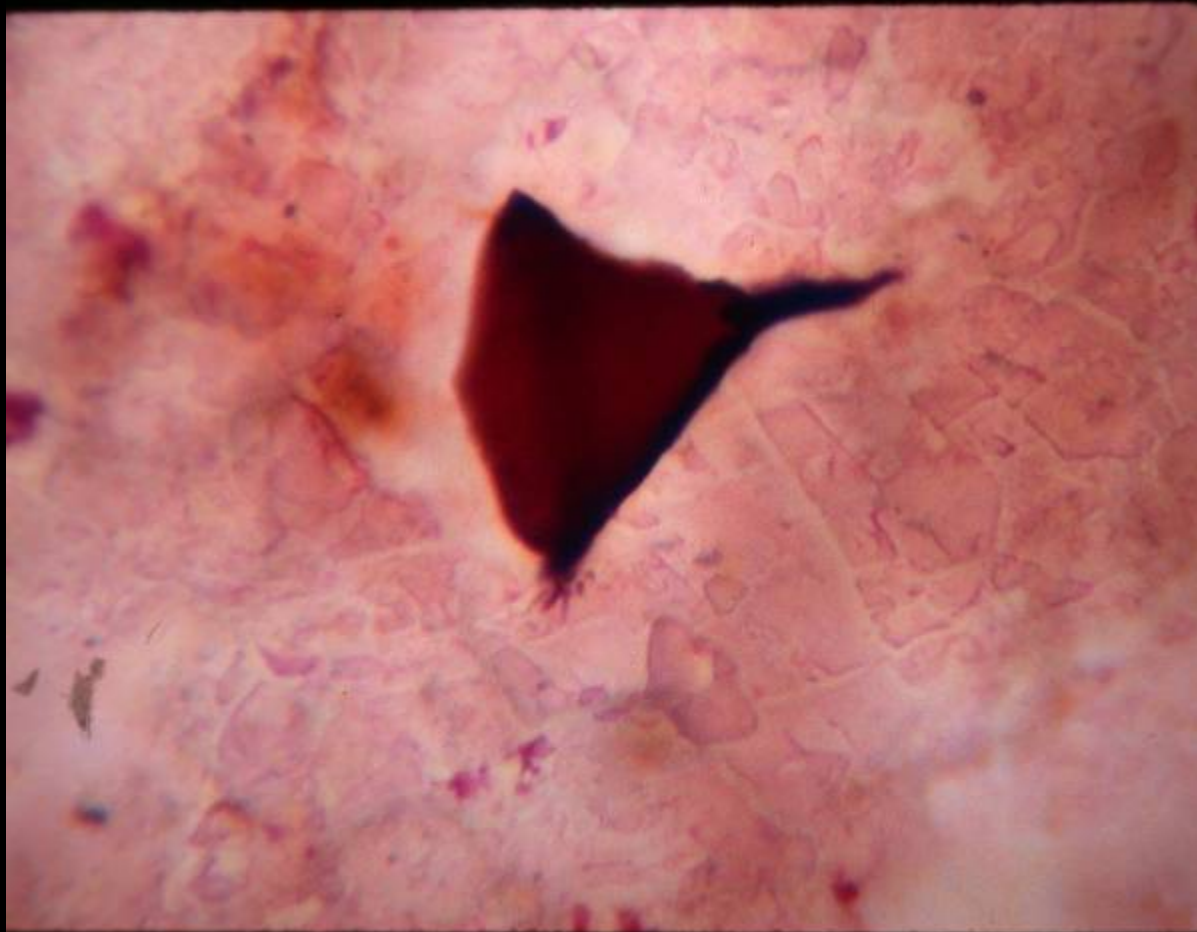


Conochitina



*Conochitina turris*





Acritarch ?