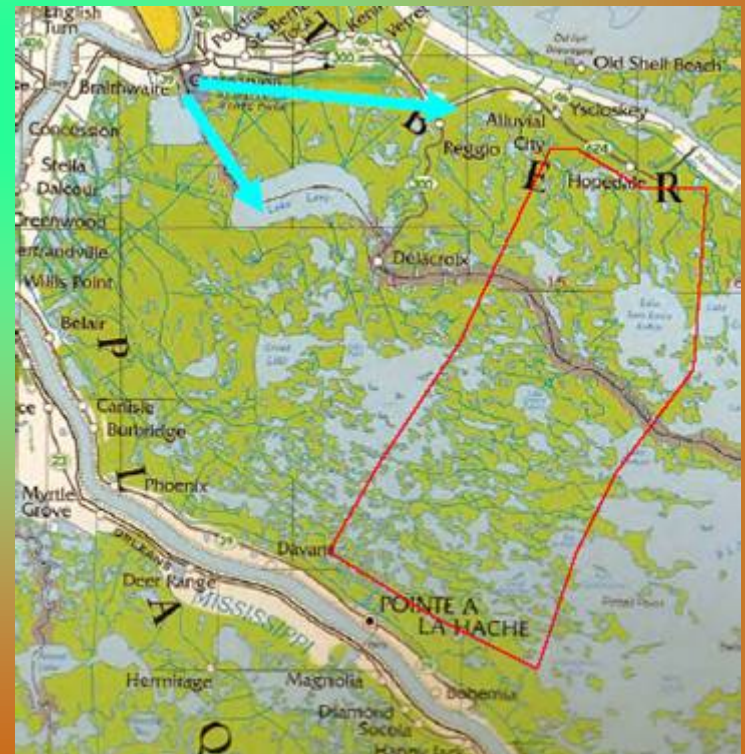
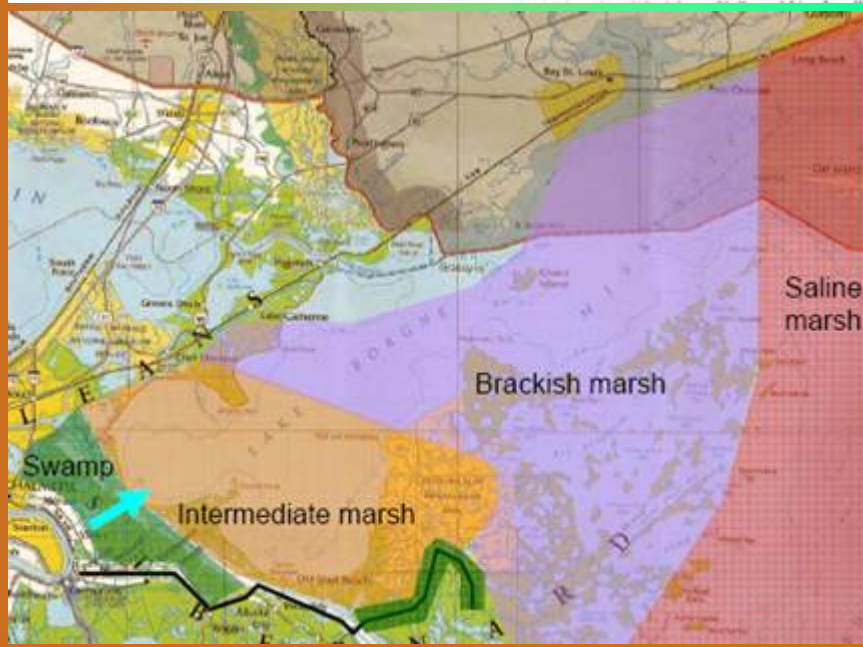
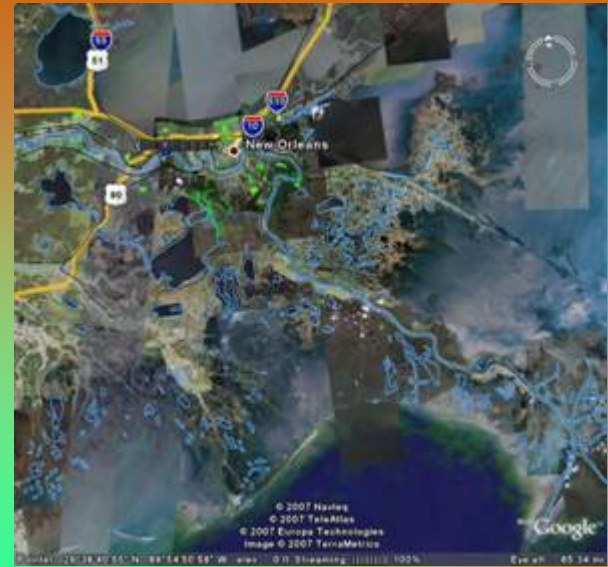
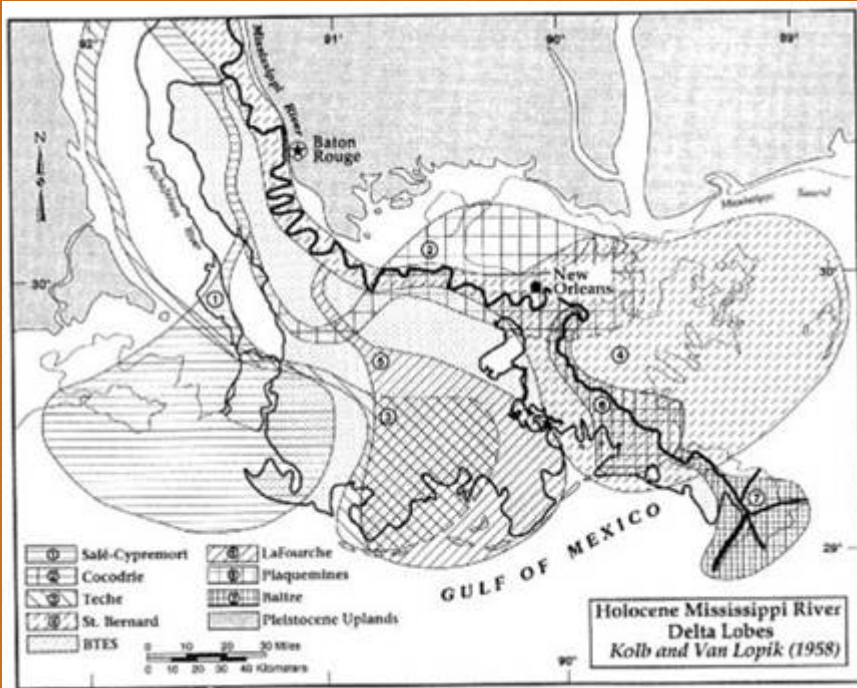


# Marsh Environment Foraminifera of the Mississippi Delta

John E.B.Baker



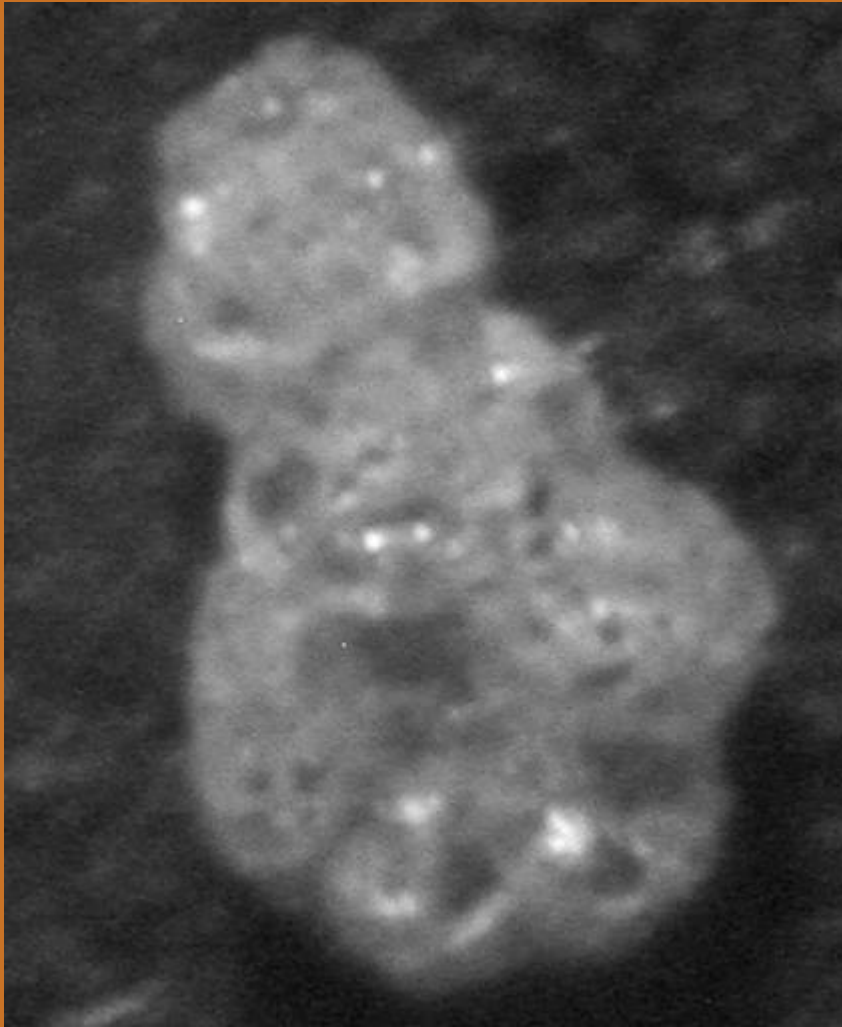






# Environment

- Low salinity <5 ppt
- Marsh-Tidal Marsh 'above' estuary
- All agglutinate (arenaceous); High acidity precludes  $\text{CaCO}_3$  tests
- Grasses decomposing=High Nutrients, Low pH
- No species are temperature sensitive



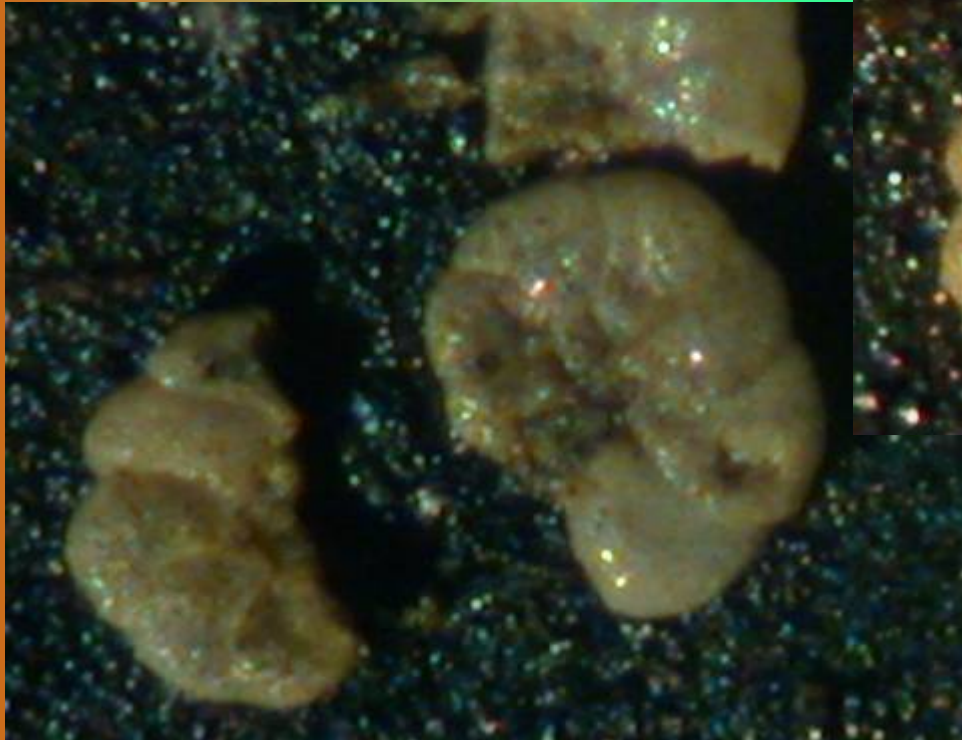
*Ammobaculites sp.*

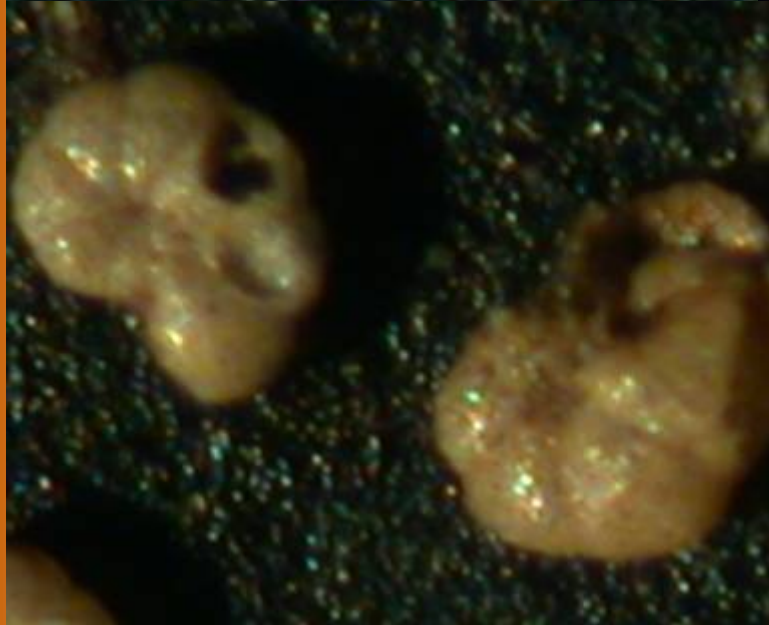
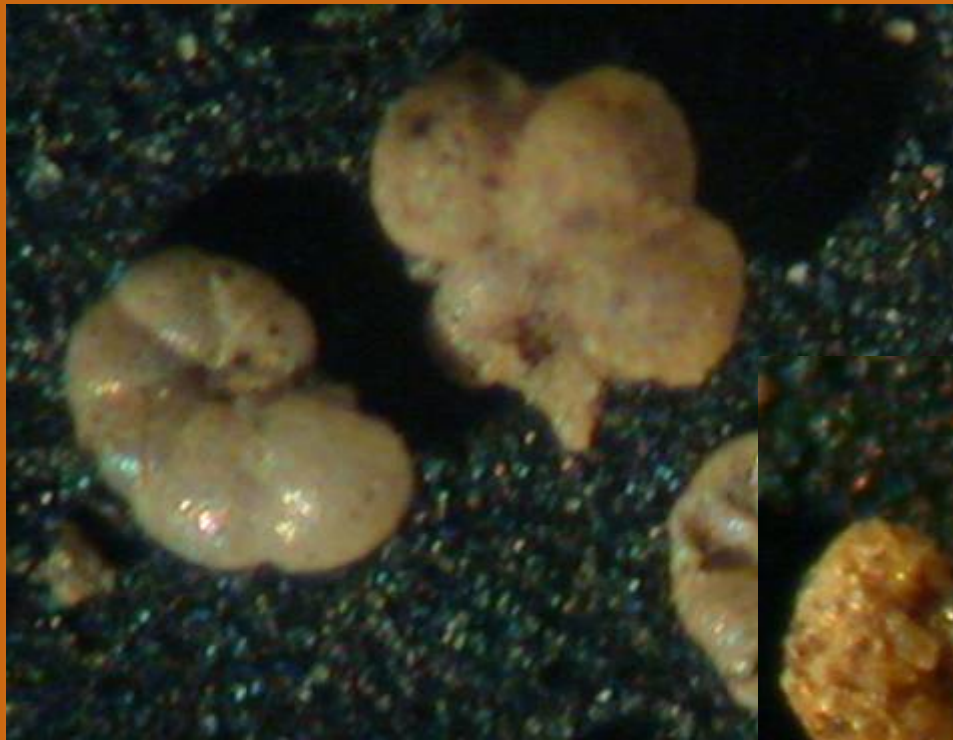


# *Tiphotrocha comprimata*



*Trochammina  
macrescens*





## *Trochammina sp.*

Phleger called this species *Recurvoides*



*M. fusca*



*Miliammina sp.*

*Ammoastuta inepta*

