

**BERMONT FORMATION (Early
– Middle PLEISTOCENE)
MICROFOSSILS From The Big
Island Quarry, Northern Collier
County, FLORIDA**



John E. B. Baker, *mikrogeo.com*

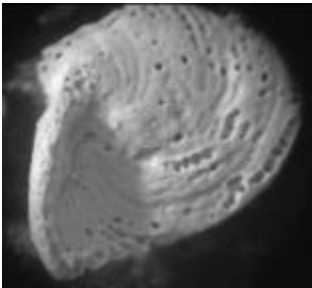
Bermont Fm, Early to Middle Pleistocene, Big Island Quarry, Collier County, FL: Pt I. Foraminifera-



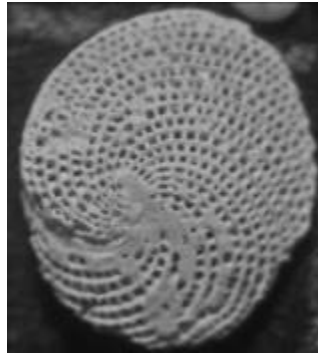
Articulina sagra



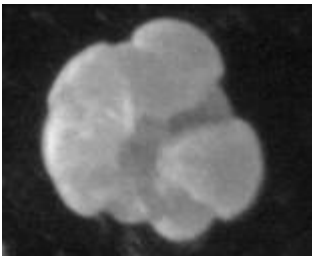
Articulina sagra



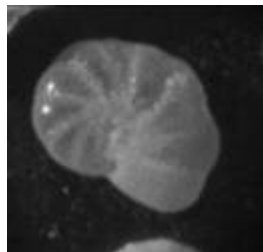
Archais angulatus



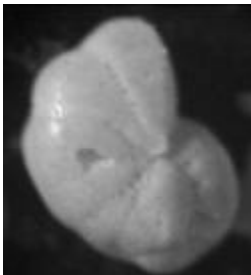
A. angulatus



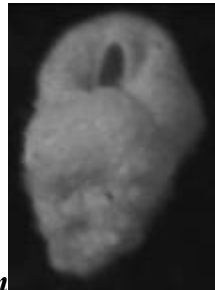
Tretomphalus atlanticus



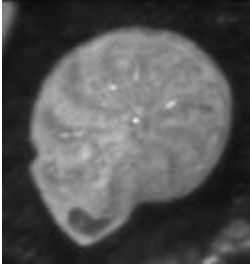
Cribroelphidium



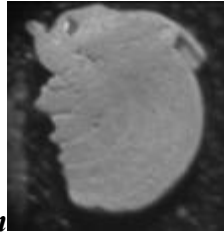
Cribroelphidium poeyanum



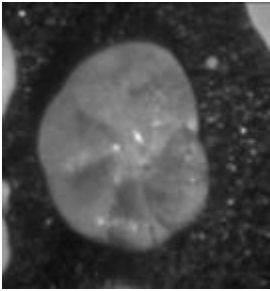
Valvulina oviedoiana



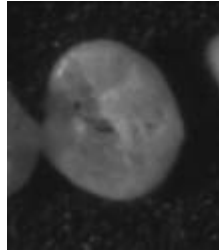
Elphidium fimbriatulum



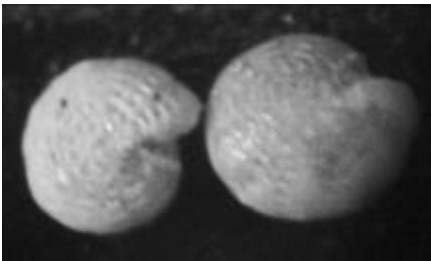
Peneroplis bradyi



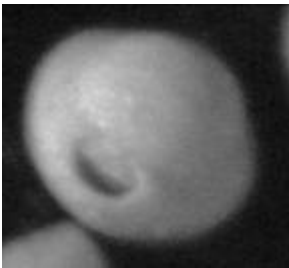
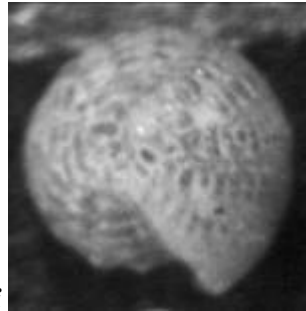
Rosalina subaraucana



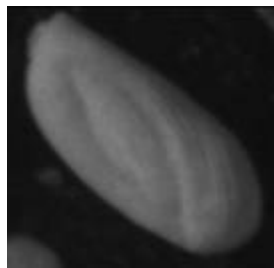
R. floridensis



Elphidium gunteri



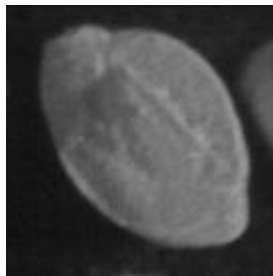
Pyrgo murrhina



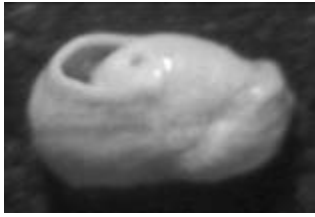
Quinqueloculina poeyana



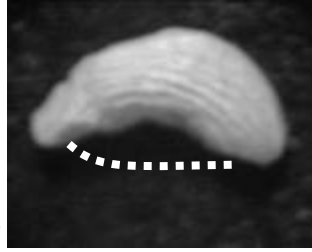
Q. lamarckiana



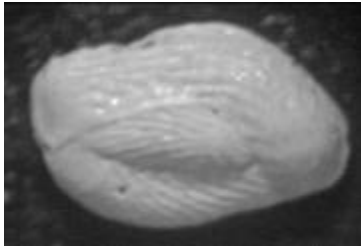
Q. bicostata



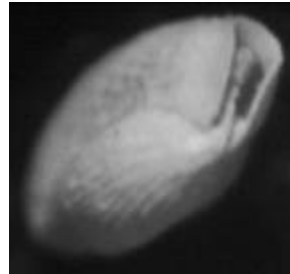
Triloculia sidebottomi



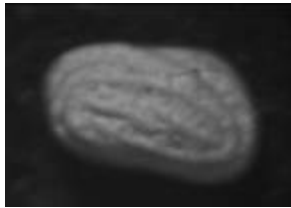
T. linneiana



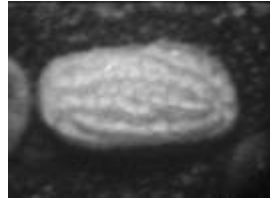
T. carinata



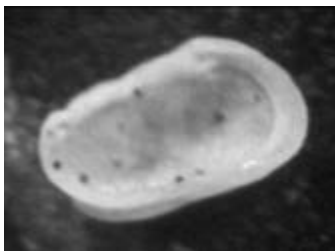
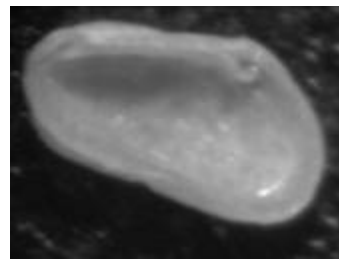
Pt II. Ostracods



Climacoidea pleurata

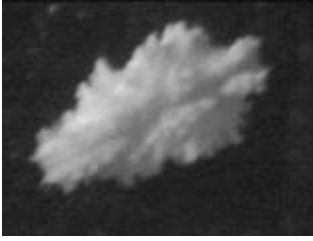


Climacoidea pleurata

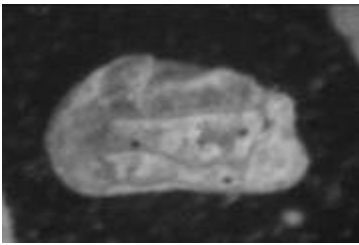
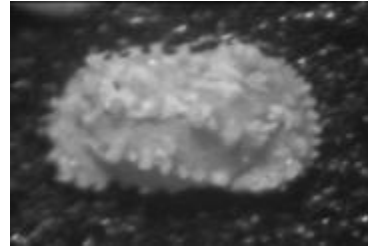


Climacoidea pleurata

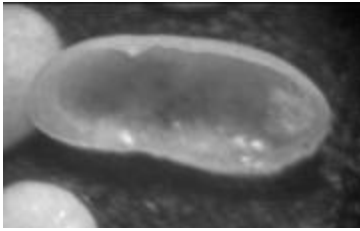
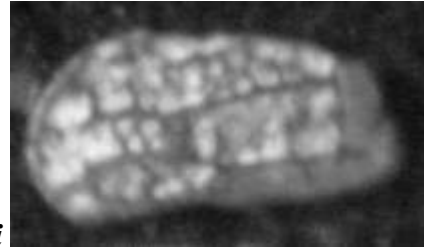




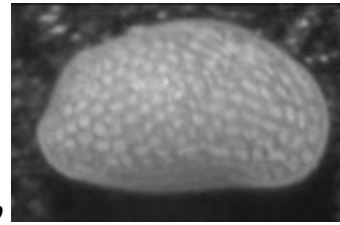
Actinocythereis captionis



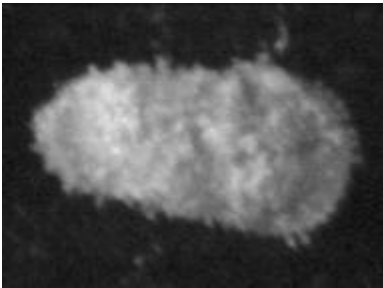
Orionina vaughani



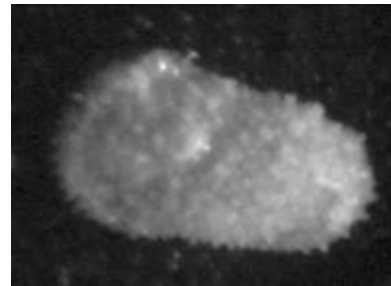
Pontocythere sp



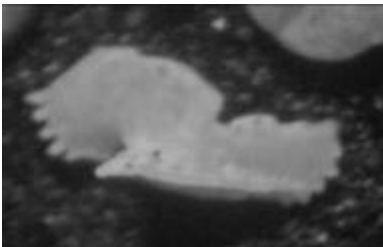
Aurila sp



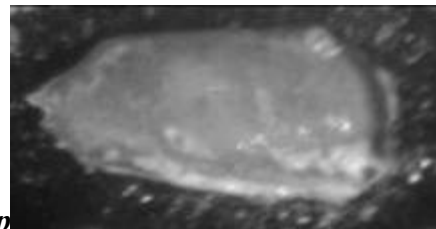
Henryhowella sp

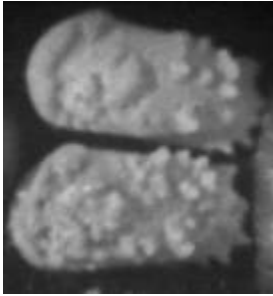


Macrocyprina propinqua

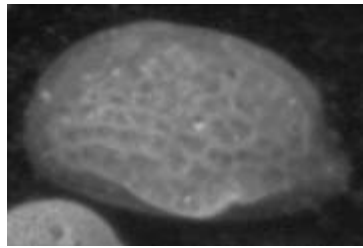


Pterygocythereis sp

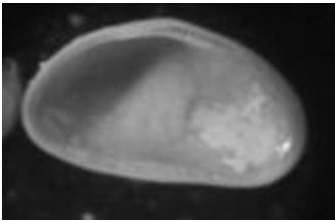




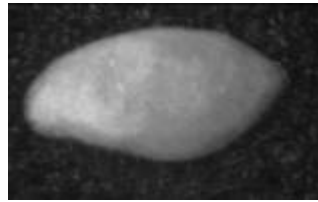
Puriana floridana



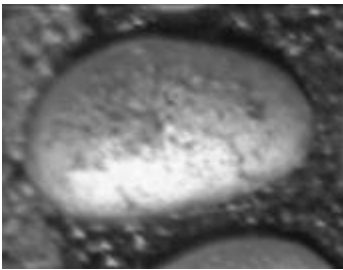
Malzella conradi



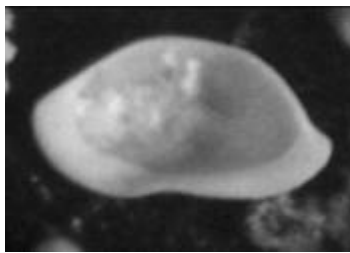
Peratocytheridea setipunctata



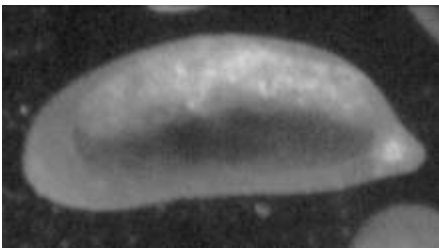
Pellucistoma magniventra



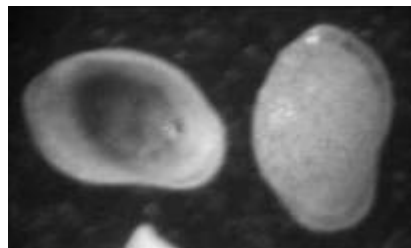
Cyprideis sp 1



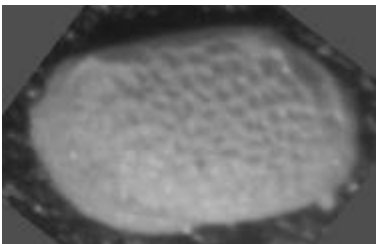
Bairdoppilata sp



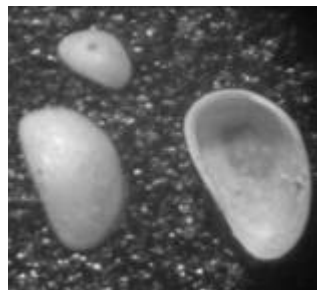
Hulingsina sp



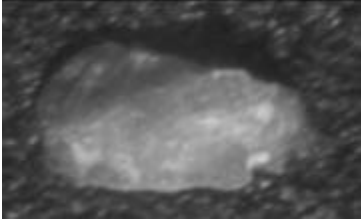
Loxoconcha matagordensis



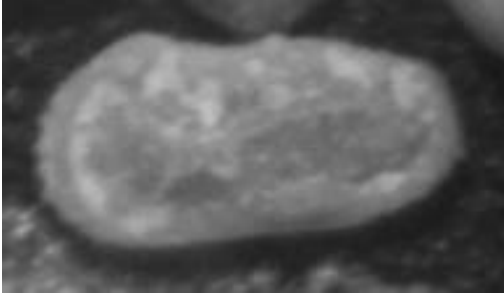
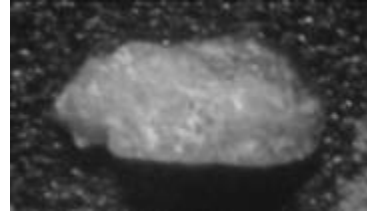
Loxoconcha suboculocrista



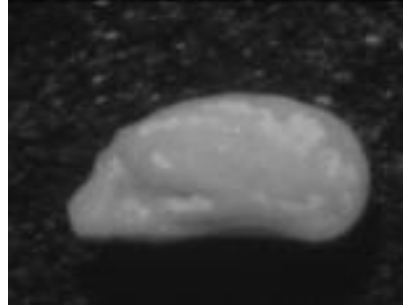
Xestoleberis sp



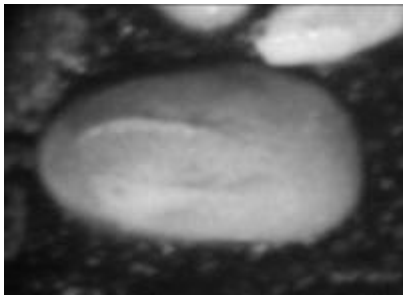
Paracytheridea hazeli



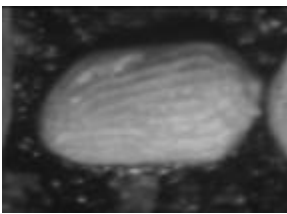
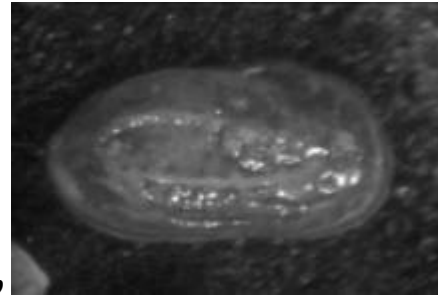
Neocaudites angulata



Caudites parasymmetricus ♂



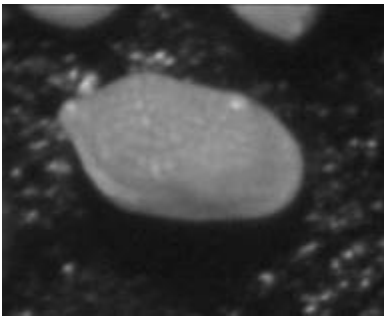
Protocytheretta sp



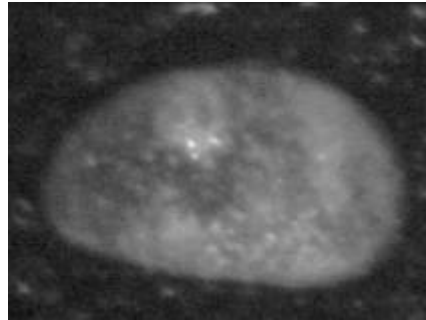
Cytherura wardensis



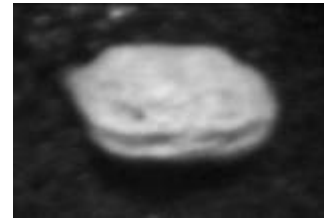
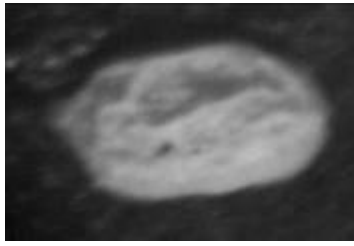
Orionina vaughani



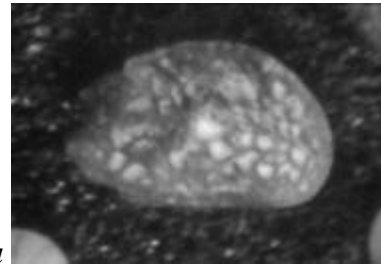
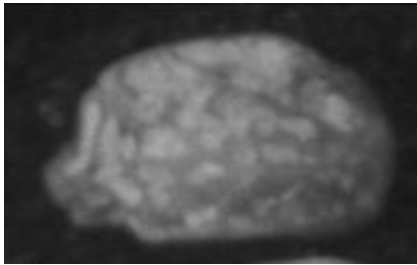
C. valentini



Cyprideis sp2



Cytherura pseudostrata

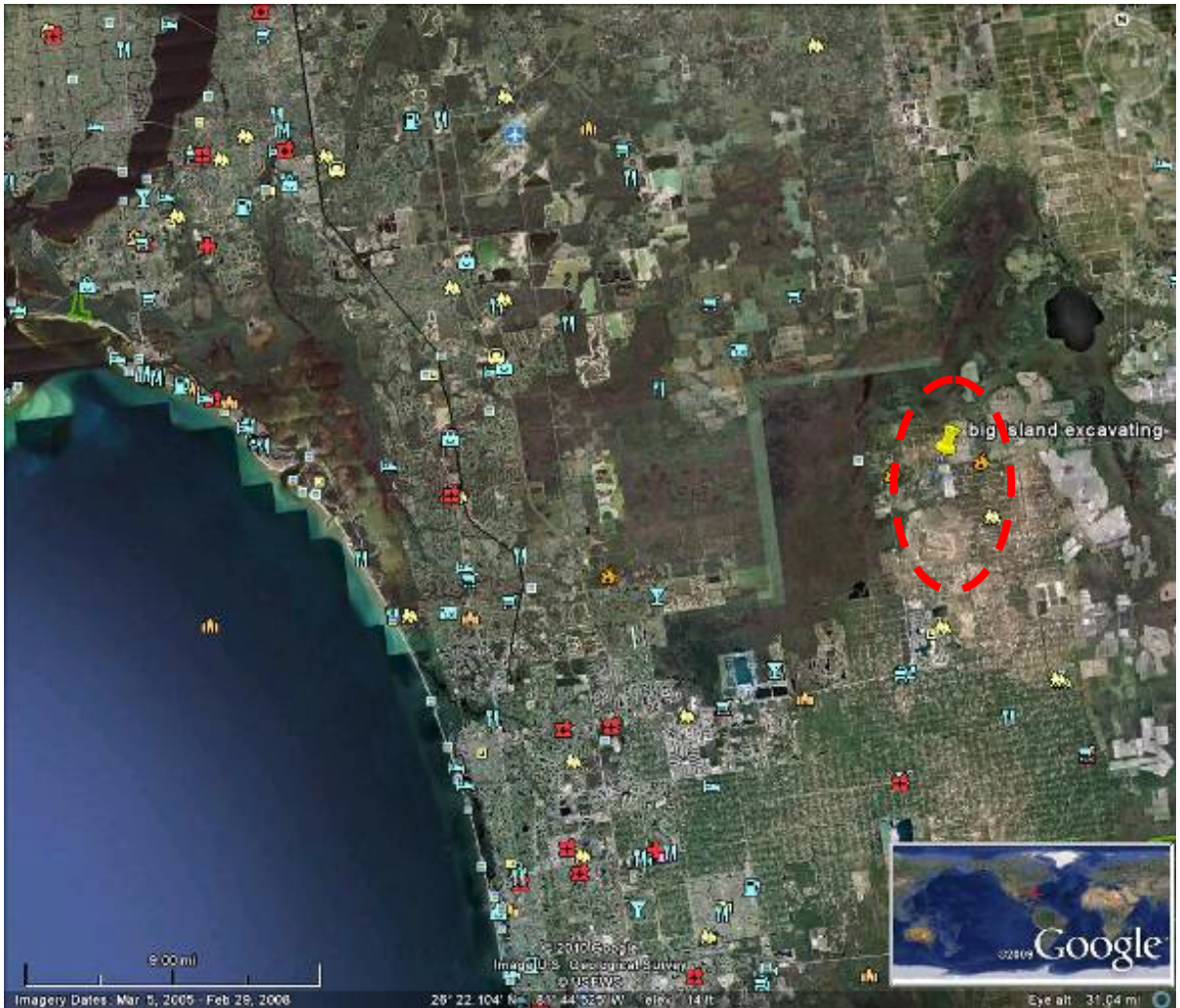


Radimella confragosa

Conclusion: A shallow water, normal (*Ammonia / Elphidium* Ratio is very low) marine (Salinity = ~35 ‰ inner shelf) fauna. Based on small, individual heads of corals (*Solenastrea, Porites & Diploria*- no true reef-but a 'back-reef lagoon' environment) some *Halimeda* fragments and a number of forams and ostracods which are *Thalassia* epiphytes today, this was a 'turtle-grass' (*Thalassia*) bed during a eustatic marine transgression which formed in an early to mid Pleistocene interglacial period. The temperature was tropical, similar to today and possibly warmer. The environment was very similar to today's Florida Bay, now 200 km south.



Big Island Quarry, northern Collier Co., ~9 mi. SW of Immokalee on Immokalee Rd

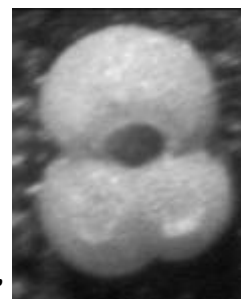


<i>MY</i>	<i>POLARITY</i>	<i>EPOCH</i>	<i>AGE</i>	<i>LARGE MET IMPACTS</i>
0 0.1 0.2 <i>BRUNHES</i> 0.3 0.4		Late Pleistocene	Holocene Late	<10,000
0.5 0.6 0.7 0.8				
0.9 1 <i>M</i> 1.1 <i>A</i> 1.2 <i>T</i> 1.3		Early Pleistocene	Early	
<i>U</i> 1.4 <i>Y</i> 1.5 <i>A</i> 1.6 <i>M</i> 1.7 <i>A</i> 1.8				
1.9 2 2.1 2.2 2.3 2.4 2.5		Late	<i>G</i> <i>a</i> <i>l</i> <i>e</i> <i>s</i> <i>i</i> <i>a</i> <i>n</i>	<i>Eltanin Impact</i>

General age of Bermont Formation: Yarmouth Interglacial ?



Globigerinoides ruber



A planktonic foraminifera found in the Bermont Fm.